



**Report on Abandoned Mine Land Reclamation
Economic Development Pilot Program
(AML Pilot Program) for FY 2016 – FY 2018**

*Prepared by the Office of Surface Mining
Reclamation and Enforcement (OSMRE)*

I. Introduction and Background

As of November 30, 2018, the Abandoned Mine Land Reclamation Economic Development Pilot Program (AML Pilot) has been authorized by Congress for three fiscal years (FY 2016, FY 2017, and FY 2018) with the purpose of reclamation of abandoned mine lands in conjunction with economic and community development and reuse goals. The Office of Surface Mining Reclamation and Enforcement (OSMRE) administers the AML Pilot program and provides eligible states and tribes with AML Pilot Grants and guidance to use the funds and track the progress of projects.

The AML Pilot Program for FY 2016 was enacted by the [Consolidated Appropriations Act, 2016](#) (Public Law 114-113) on December 18, 2015. It provided \$90 million of US Treasury Funds (\$30 million each) to the three Appalachian state AML Programs (Kentucky, Pennsylvania and West Virginia) (*Figure 1*) which have the highest amount of unfunded coal-related problems that are classified as Priority 1 and Priority 2 abandoned mine lands sites and inventoried in the Enhanced Abandoned Mine Land Inventory System (e-AMLIS). For FY 2016, OSMRE has issued preliminary approval¹ for 36 projects which confirms the project's eligibility to receive AML Pilot funds (Kentucky – 10 projects, Pennsylvania – 18 projects, and West Virginia – 8 projects) (*Figure 2*). As of November 30, 2018, 30 of 36 preliminarily approved projects have received OSMRE's authorization to proceed (ATP) allowing them to begin construction and other field activities. As of the same date, 14 projects commenced work on-site, and 1 project has been completed.

The FY 2017 AML Pilot was enacted on May 5, 2017 under the [Consolidated Appropriations Act, 2017](#) (Public Law 115-31). It provided \$105 million of US Treasury Funds to the six Appalachian states with the highest amount of unfunded coal-related problems. The three states with the highest amount of unfunded coal-related problems each received \$25 million (Kentucky, Pennsylvania and West Virginia) and the three Appalachian states with the subsequent highest amount of unfunded coal-related problems each received \$10 million (Alabama, Ohio, and Virginia) (*Figure 1*). For FY 2017, OSMRE has issued preliminary approval for 45 projects (Kentucky – 8 projects, Pennsylvania – 12 projects, West Virginia – 9 projects, Alabama – 3 projects, Ohio – 8 projects, and Virginia – 5 projects) (*Figure 2*). As of November 30, 2018, 16 of 43 preliminarily approved projects have received OSMRE's ATP to begin construction and other field activities.

The FY 2018 AML Pilot was enacted on March 23, 2018 under the [Consolidated Appropriations Act, 2018](#) (Public Law 115-141). It provided \$115 million of US Treasury Funds to the six Appalachian states with the highest amount of unfunded coal-related problems and three tribes with AML Programs. The three Appalachian states with the highest amount of unfunded coal-related problems each received \$25 million (Kentucky, Pennsylvania and West Virginia), the three Appalachian states with the subsequent highest amount of unfunded coal-related problems each received \$10 million (Alabama, Ohio, and Virginia), and the three tribes with AML Programs each received \$3.33 million (Crow Tribe Hopi Tribe, and Navajo Nation) (*Figure 1*).

This report describes the process (*Figure 3*) and implementation actions (*sections 3, 4, and 5*) for the AML Pilot Program.

¹ Preliminary approval from OSMRE confirms that a project is eligible to receive Pilot funds based on OSMRE's [Guidance for Project Eligibility Under the Abandoned Mine Land Reclamation Economic Development Pilot Program](#).

Figure 1: Appropriated AML Pilot Funding (Millions of Dollars)

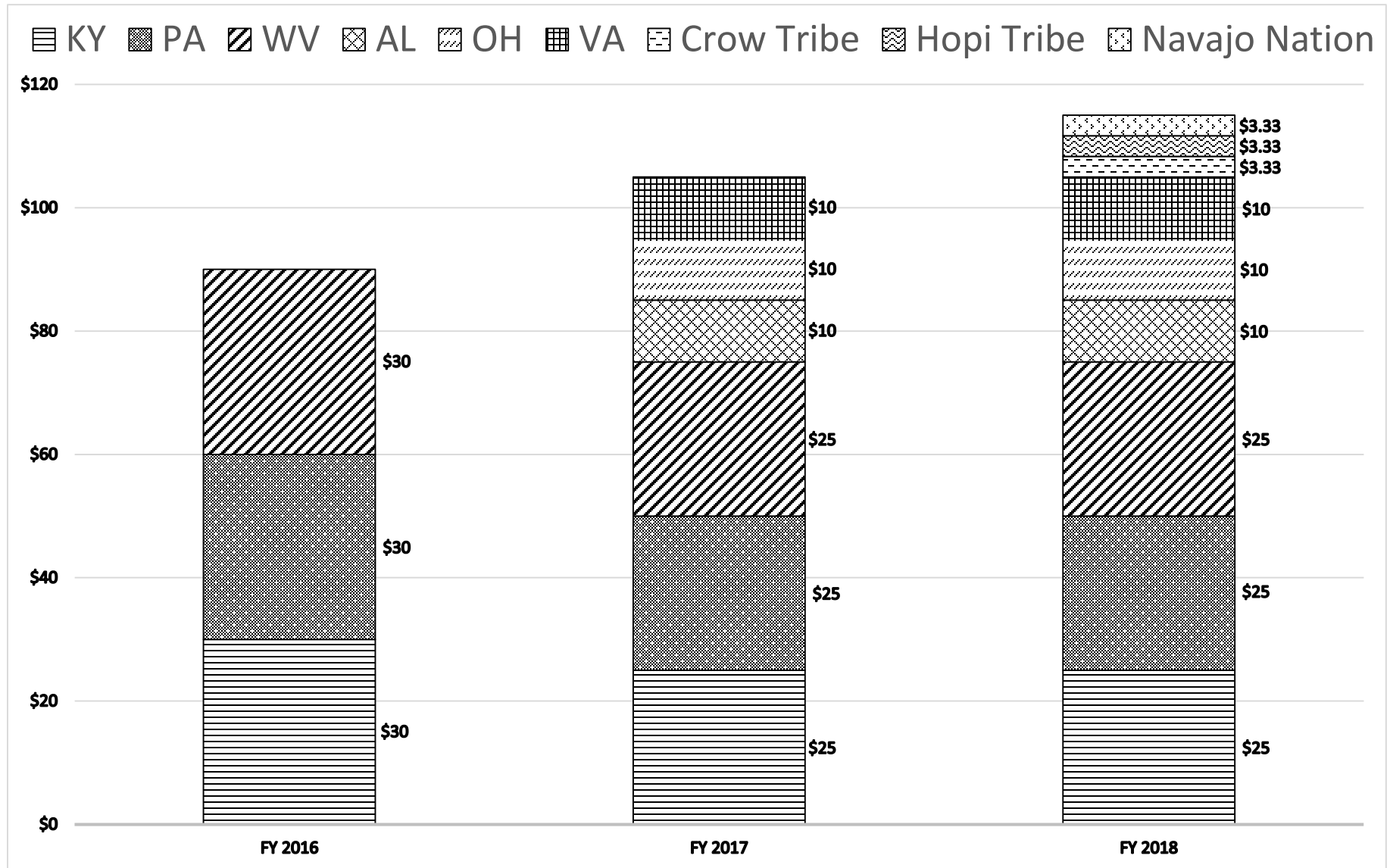
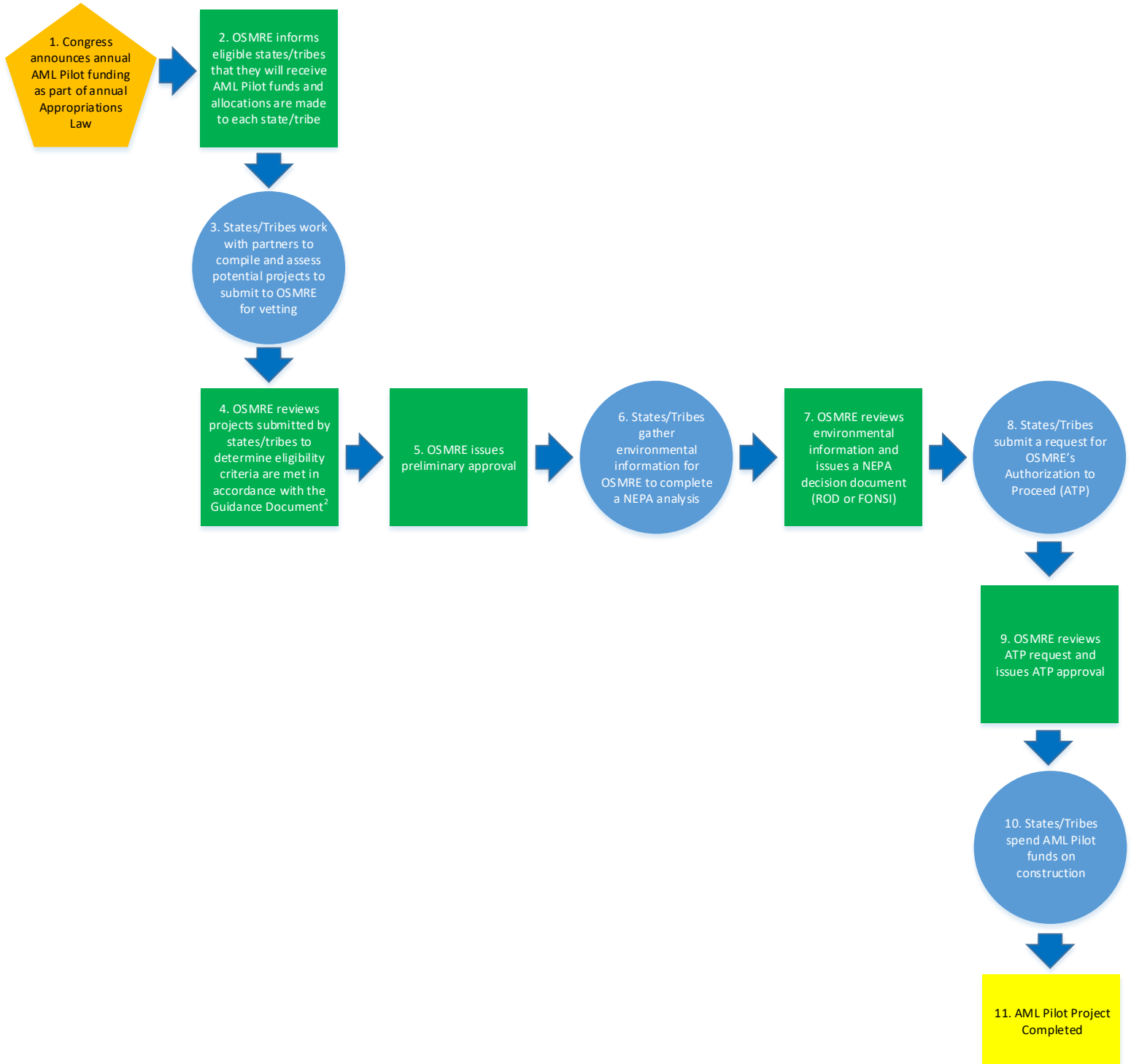


Figure 2: AML Pilot Projects with OSMRE Preliminary Approval



Figure 3: AML Reclamation Economic Development Pilot Process



² OSMRE's *Guidance for Project Eligibility Under the Abandoned Mine Land Reclamation Economic Development Pilot Program*

II. Current Status of Projects by Fiscal Year and State:

As of November 30, 2018, OSMRE has reviewed and issued preliminary approval (based on eligibility criteria) to 81 AML Pilot project applications submitted by the state/tribal AML Programs (36 projects for FY 2016 and 45 for FY 2017). Applications are reviewed on a rolling-basis to efficiently provide feedback to each state. OSMRE has confirmed that 72 of the 81 reviewed projects are currently active and are moving forward in their use of AML Pilot funds. The 9 remaining projects have been tabled for various reasons (and include 3 that had received an ATP). To account for these changes, the following section highlights adjustments that have been made to the funding projected for each project and identifies new projects that have been vetted and reviewed to use the AML Pilot funds in their place. Funds projected for each Pilot project are subject to change based on the needs of the project and program.

Outlined below are the 72 projects with preliminarily approved for AML Pilot funds and 6 tabled projects from FY 2016 which include: 16 in Kentucky (10 in FY 2016 and 6 in FY 2017), 30 in Pennsylvania (18 in FY 2016 and 12 in FY 2017), 16 in West Virginia (8 in FY 2016 and 8 in FY 2017), 3 in Alabama, 8 in Ohio, and 5 in Virginia. Based on the projected amounts for AML Pilot funding for these selected project proposals, all six state AML programs are at or near their grant threshold for each AML Pilot grant.

Once an AML Pilot project has received OSMRE's preliminary approval, project proponents may continue working with their state, tribe, and local development authorities to secure other private and public funding; finalize design and planning approvals/permits; resolve land acquisitions (if applicable); and address access issues. Before utilizing AML Pilot funds, project proponents work with the state/tribal AML programs to prepare and submit a scope of work to OSMRE that includes: site-specific details; project timelines; and completed environmental documents, such as those needed to support compliance with the National Environmental Policy Act (NEPA). Once this informational package is submitted to OSMRE, the Bureau will review and grant final ATP approval based on the site-specific information and compliance with the [OSMRE NEPA Handbook](#). The ATP allows each state/tribal AML program to award contracts and subcontracts for the expenditure of AML Pilot funds. To date, 43 of the 72 active AML Pilot projects have received OSMRE's ATP to begin construction and other field activities. Of these, 14 projects have commenced work on-site and 1 has been completed.

III. Implementation of the FY 2016 AML Pilot Program

OSMRE facilitated a meeting on February 24, 2016, in West Virginia with state AML Program staff from Kentucky, Pennsylvania and West Virginia to obtain input on the implementation on the AML Pilot Program. A second meeting was held on March 16, 2016, in Lexington, Kentucky to solicit input from additional stakeholders on the AML Pilot. OSMRE also participated in workshops with economic development organizations convened by the Appalachian Regional Commission (ARC) in the three states to provide information about the AML Pilot Program and to encourage state and local economic developers to identify opportunities to align and leverage their efforts with AML reclamation projects.

OSMRE released the *FY 2016 AML Pilot Guidance Document* to stakeholders on May 2, 2016. This guidance document was developed by OSMRE to assist the states in their selections of projects. The guidance document outlined general criteria by which potential projects should be

evaluated for eligibility and successful selection, as well as suggested means by which projects could meet the economic and community development nexus criteria.

Between June and September 2016, OSMRE awarded the FY 2016 AML Pilot grants (\$30 million to each Kentucky, Pennsylvania and West Virginia). On August 4, 2016, OSMRE celebrated the first AML Pilot project to break ground with an event at the Ehrenfeld Economic Development Project in Pennsylvania, which involved the cleanup of a coal refuse waste pile to provide 62 acres of developable land within the city limits of Ehrenfeld.

FY 2016 Kentucky

Since the previous AML Pilot Report, Kentucky has submitted four additional project applications to use FY 2016 Pilot funds for a total of ten projects that have received OSMRE's preliminary approval. One of the ten projects has been tabled while the project proponent secures additional funding. Nine projects are currently active and have been awarded a portion of the \$30 million from the FY 2016 AML Pilot grant for KY. If applicable, changes in active projects and revisions to pilot funding requests from the previous Pilot Report are marked as an "Update" for each project in the list below.

Located across nine counties in eastern Kentucky, the nine active FY 2016 AML Pilot projects include six outdoor recreation/conservation/education projects, one industrial improvement projects, and two professional development/training projects. Projects were selected for AML Pilot funding based on their potential to create long-term economic benefits in local coal communities. These projects will result in estimated outcomes that include: increased tourism attracting over 600,000 visitors to the region; workforce training for over 225 students annually; opportunities for educational outreach activities to over 100,000 participants; over \$140 million in generated revenue; construction of over 45 miles of public trails; directly and indirectly create over 3,000 new jobs; and broader impacts that will yield infrastructure development, stronger local businesses, and restoration of public lands. In addition, the pilot projects have the potential to leverage an additional \$2 for every \$1 of AML Pilot Program funding from public and private economic development funds. Additional information can be found through the [Kentucky Energy and Environment Cabinet](#).



Map of active preliminarily approved projects receiving FY 2016 AML Pilot funds in Kentucky

Appalachian Wildlife Center

Status: Preliminary OSMRE approval (8/26/16) - OSMRE Final Approval ATP issued (5/1/18) - Construction started (5/30/18)

Location: Bell County

Requested AML Pilot Funding: \$12.5 million

Additional Funding: \$1.8 million awarded by ARC through the POWER 2016 Federal Funding Opportunity and \$8.2 million committed by other project partners

AML Site Info: Priority 3 unreclaimed and previously reclaimed

Project Partners: KY Department of Fish and Wildlife Resources, Bluegrass International Fund, Appalachian Regional Commission, Asher Land & Minerals Co., Monsanto, Jamieson Construction, and Cumberland Surety

Update: Requested funding reduced from \$17 million to \$12.5 million

The Appalachian Wildlife Center comprises 246 acres and is the most extensive project proposal in Kentucky approved for AML Pilot funding. Its centerpiece is the construction of a visitor center that features the largest elk restoration and viewing effort in the United States and is projected to bring \$124 million into the regional economy. The facility will include: a visitor center with a museum and theater, auto tour loop, trails over 19 square miles, and a wildlife and nature preserve on 12,000 acres of previously mined land. Scheduled to open in 2019, this project is expected to attract over 600,000 annual visitors, directly reach over 100,000 students in the region as part of its educational program, and spur future growth and diversification of the local economy. The Wildlife Center will directly employ 94 people at well-paying salaries and will result in the indirect creation of over 2,000 regional jobs.



Rendering of the future Appalachian Wildlife Center Building

East Kentucky Advanced Manufacturing Institute (eKAMI) Phase 1

Status: Preliminary OSMRE approval (9/14/16) - OSMRE Final Approval ATP issued (4/19/17) - Construction started (5/16/17)

Location: Johnson County

Requested AML Pilot Funding: \$2.5 million

AML Site Info: Priority 3 unreclaimed

Project Partners: Kentucky Cabinet for Economic Development, Shaping Our Appalachian Region, One East Kentucky, Eastern Kentucky Concentrated Employment Program, Lockheed Martin, and Vincennes University

Update: Building was opened on February 20, 2018, but FY 2016 AML Pilots funds are still being utilized to expand training space within the facility.

The East Kentucky Advanced Manufacturing Institute (eKAMI) is located adjacent to abandoned mine lands and will operate and maintain a training center that provides a computer numeric controlled (CNC) training program in advanced manufacturing. The center will train up to 100 students annually to industry-recognized skill certification. The immediate beneficiaries include: students (many former coal industry employees) and regional employers seeking qualified CNC machinists.



eKAMI building opened on February 20, 2018

Harlan Wood Products Project – Currently Tabled

Status: Preliminary OSMRE approval but currently tabled while project proponents secures additional funds

Location: Harlan County

Requested AML Pilot Funding: None – Previously requested \$2.5 million

Additional Funding: N/A

AML Site Info: Priority 3 previously reclaimed

Project Partners: Harlan Wood Products LLC

Update: Project currently tabled and will not use FY 2016 AML Pilot funds

This project was proposed to construct the infrastructure, road access, and water storage facilities for the new Harlan Wood Products production center that will produce wood pellets to be sold as biomass fuel. Approximately 75,000 tons of wood pellets will be produced annually at this facility for export to international markets. This project will directly employ 30 to 35 people and result in approximately 60 new indirect jobs. The project proposal requests \$2.5 million from the AML Pilot and will leverage an additional \$10.5 million from Harlan Wood Products, LLC. This project is currently tabled while project proponent secures additional funds and may request Pilot funds again in future grants.

Impact Outdoor Adventure

Status: Preliminary OSMRE approval (9/23/16) - OSMRE Final Approval ATP issued (12/8/17) - Construction started (5/14/18)

Location: Clay County

Requested AML Pilot Funding: \$500,000

Additional Funding: \$9,100 from other sources

AML Site Info: Priority 3 unreclaimed and previously reclaimed

Project Partners: Operation UNITE, Clay County Industrial Board

Impact Outdoor Adventures, a non-profit organization, proposes to create an Outdoor Adventure Park for mountain bikes adjoining 15 miles of existing trails. This project will include an archery center and a horse barn and equine center on a 47 acre tract donated by the Clay County Industrial Board. The completed project will employ four to five people in permanent positions with the potential for more while increasing the number of annual visitors to the area.

Lineman Training

Status: Preliminary OSMRE approval (11/17/16) - OSMRE Final Approval ATP issued (8/17/18)

Location: Leslie County

Requested AML Pilot Funding: \$1.15 million

AML Site Info: Priority 3 unreclaimed

Project Partners: Hazard Community & Tech College and Big Sandy Community & Tech College

Update: Requested funding reduced from \$1.2 million to \$1.15 million

This project will establish an electrical lineman training program at the Kentucky Community and Technical College System (KCTCS). Workers would be trained for use of fiber optics and splicing of dark fiber. The field lab for the training program is located adjacent to AML sites and it will be utilized for practical training experience. The project is expected to train 125 people (primarily displaced former coal miners) and generate \$15 million in wages over five years.

Marion Branch Industrial Park Project

Status: Preliminary OSMRE approval (9/2/12) - OSMRE Final Approval ATP issued (9/13/17) - Construction started (1/2/18)

Location: Pike County

Requested AML Pilot Funding: \$5 million

Additional Funding: \$43.5 million from national and regional investors

AML Site Info: Priority 3 unreclaimed and previously reclaimed

Project Partners: KY Transportation Cabinet, US Army Corps of Engineers, US Department of Commerce Economic Development Administration, US Housing and Urban Development Community Development Block Grant, SF Loan (pending), ARC Grant (pending), USDA Rural Development Loan and Grant Program

This project invests in digital technology infrastructure development near existing AML projects to further develop the Marion Branch Industrial Park. Planned work includes a 50,000 sq. ft. industrial building, a broadband conduit, and foundation fill. Tens of millions of dollars have been committed from other sources and are currently being utilized on the ground. The infrastructure provided by the project will attract companies to the area, resulting in a stronger local economy and long term stability of the community. Project developers expect to attract over 1,000 additional well-paying jobs to the area, and to stabilize the tax base of local communities.



Marion Branch Industrial Park Worksite.
Photo Credit: Kentucky Division of Abandoned Mine Lands

Prestonsburg to David (Rails to Trails) – Added since the FY 16 – FY 17 Pilot Report

Status: Preliminary OSMRE approval (6/23/17) - OSMRE Final Approval ATP issued (11/19/18)

Location: Floyd County

Requested AML Pilot Funding: \$1.95 million

AML Site Info: Priority 3 unreclaimed

Project Partners: City of Prestonsburg

Update: Project added to FY 2016 AML Pilot grant due to the availability of funding

This project would purchase 11.4 miles of railway from CSX and develop it into a trail system from Prestonsburg to David. The proposed trail would be 10 feet wide and extend the existing Garfield Trail and connect Prestonsburg with the Middle Creek National Civil War Battlefield. Local points of interests in proximity to the trail include; parks, golf course, art center, planetarium, community college, and other trails which expect to see an increase in visitation.

Portal 31 and Black Mountain High Point Project – Added since the FY 16 – FY 17 Pilot Report

Status: Preliminary OSMRE approval (9/27/18)

Location: Harlan County

Requested AML Pilot Funding: \$2.55 million

Additional Funding: \$650,000 from local/in-kind sources

AML Site Info: Priority 3 unreclaimed

Project Partners: Harlan County Fiscal Court (Harlan County tourism Commission), Meridzo Center, Inc., Penn Virginia Corporation

Update: Project added to FY 2016 AML Pilot grant due to the availability of funding

This project will provide needed upgrades to the Portal 31 Exhibition Mine, construct the Lynch Bathhouse and Administrative Building, and create a viewing area and parking lot on Black Mountain. The Portal 31 Mine will involve structural work and cleanup of the mine tunnel, upgrades to the current exhibits, and expansion to include new and additional tours. The adjacent Lynch Bathhouse and Administrative building will house facilities for visitors and 4 new businesses. Lastly, a parking lot, trail, and 40' observation deck will be built on Black Mountain that overlooks the area. In total the economic benefits from this project include; an estimated increase in annual visitors from 6,000 to 10,000 (increasing the local economic impact by \$600,000 per year) and the retention of 45 jobs and the creation of 20 new permanent jobs (with a total impact of \$1.2 million in annual payroll).

South Fork Elk View Waterline and Campground Project

Status: Preliminary OSMRE approval (6/23/17)

Location: Breathitt County

Requested AML Pilot Funding: \$1.95 million

AML Site Info: Priority 3 unreclaimed

Project Partners: Kentucky River Area Development District, Breathitt County Water District

Update: Requested funding increased from \$1.9 million to \$1.95 million

This project plans to construct over 6 miles of water supply line to the elk viewing area located on HWY 1098. Additionally, hydrants, storage tanks, a pump station and a campground with bathhouse and playground will also be constructed. The campsite will allow for 15 tent sites and 5

full hook-up sites that include electricity, water, and sewer. It is estimated to initially create 10 – 15 jobs and increase economic development through adventure tourism.

Royalton Trail Town Development

Status: Preliminary OSMRE approval (7/19/17) - OSMRE Final Approval ATP issued (11/19/18)

Location: Magoffin County

Requested AML Pilot Funding: \$1.9 million

AML Site Info: Priority 3 unreclaimed

Project Partners: Royalton Trail Town Inc., Kentucky Office of Adventure Tourism, Kentucky Department of Travel, Kentucky Department of Parks

This project involves the development of 15+ acres in Royalton Kentucky along the Dawkins Line Rail Trail to encourage commercial activity and tourism. This will be accomplished by the construction of campsites, a boat ramp, a stage, recreation areas, and support facilities. The project will support further business creation/development in the area directly impacted by trail users. Anticipated direct employment from the project’s construction is estimated at up to eight individuals. Visitation is expected to increase at local events including benefit events, races, trade shows, Paddle Fest, and the Royalton Trail Town Festival.

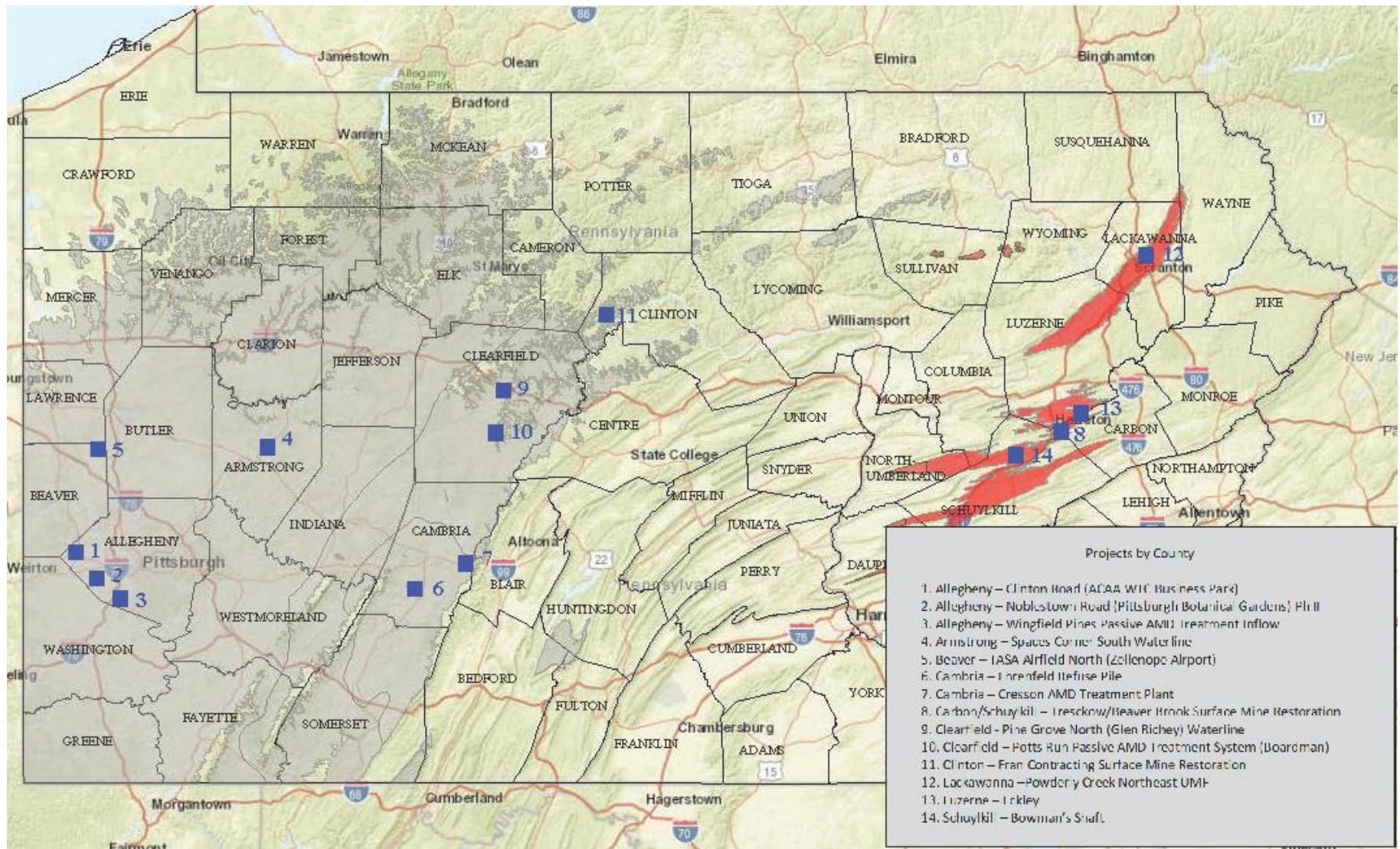


Royalton Trail Town Festival

FY 2016 Pennsylvania

Since the previous AML Pilot Report, Pennsylvania has submitted four additional projects applications to use FY 2016 Pilot funds for a total of 18 projects that have received OSMRE’s preliminary approval. Four of the eighteen project has been tabled due to various issues that are detailed below. Fourteen projects are currently active and have been awarded a portion of the \$30 million from the FY 2016 AML Pilot grant for PA. If applicable, changes in active projects and revisions to pilot funding requests from the previous Pilot Report are marked as an “Update” for each project in the list below.

Located in ten counties across Pennsylvania, the 14 active FY 2016 AML Pilot projects include six outdoor recreation/conservation/education projects, two industrial/commercial improvement projects, three waterline projects and three sites for future development. These projects were selected for funding based on their potential to create long-term economic benefits in the coal communities in which they are located. These projects will result in estimated outcomes that include: 460 acres of developable land; over 8200 direct and indirect jobs created; more than 650 residential homes and businesses benefiting from upgraded or new water supply systems; significant stream water quality improvements and restored fisheries; and increased tourism to the effect of millions of visitors per year. The 14 pilot projects have the potential to leverage an additional \$2.5 for every \$1 of AML Pilot Program funding from other abandoned mine land and abandoned mine drainage funds and/or public and private economic development funds. Additional information can be found through the [Pennsylvania Department of Environmental Protection](#).



Map of active preliminarily approved projects receiving FY 2016 AML Pilot funds in Pennsylvania

Ehrenfeld Coal Refuse Pile Reclamation Project

Status: Preliminary OSMRE approval (5/24/16) - OSMRE final approval ATP issued (7/21/16) - Construction started (7/21/16)

Location: Cambria County

Requested AML Pilot Funding: \$4.87 million

Additional Funding: \$8.59 million from traditional Title IV AML funds to address physical hazards and \$13.31 million from other sources

AML Site Info: Priority 2 and Priority 3 unreclaimed

Project Partners: Forest Hills Regional Alliance, Rosebud Mining Company, Pristine Resources Inc., Cambria County Conservation District, Stoneycreek-Conemaugh River Improvement Project, Community Foundation for the Alleghenies, South Fork & Ehrenfeld Boroughs, Croyle Township, American Chestnut Foundation

Update: Requested AML Pilot funding increased from \$3.5 million to \$4.87 million, decreased traditional Title IV AML funds from \$22.5 million to \$8.59 million, and increased funding from other sources from \$575,000 to \$13.31 million.

The AML Pilot funding is being used to complete reclamation of the 3.2 million ton abandoned Ehrenfeld Coal Refuse Pile. The coal refuse material is being excavated, hauled away, blended with alkaline material, and disposed of. This will result in the elimination of severe on-site erosion, off-site sedimentation, and a source of acid mine drainage runoff. Approximately 62 acres of mine impacted land will be restored, providing developable land within the city limits of Ehrenfeld. Forty dislocated coal miners will be provided employment during project construction. Outdoor recreation is enhanced via convenient access to the Johnstown Flood Memorial Rails to Trails system.



Ehrenfeld Coal Refuse Pile Reclamation Project
Photo Credit: Pennsylvania Department of Environmental Protection

Pittsburgh Authority Innovation Campus³

Status: Preliminary OSMRE approval (5/24/16) - OSMRE final approval ATP issued (11/3/16) - Construction started (11/3/16)

Location: Allegheny County

Requested AML Pilot Funding: \$500,000

Additional Funding: \$517,000 from traditional Title IV AML funds to address physical hazards and \$31 million from other sources

AML Site Info: Priority 2 and Priority 3 unreclaimed

Project Partners: Pittsburgh International Airport, Allegheny County Airport Authority

Update: Project name changed from "Airport Authority World Trade Center Business Park" to "Pittsburgh Authority Innovation Campus"

This project will reclaim more than 54 acres of abandoned mine land, including two dangerous highwalls. Economic benefits include facilitating the creation of the Pittsburgh Authority Innovation Campus, office space, research and development facilities, a 400-room hotel/convention center, and up to six corporate airplane hangars. According to the Allegheny County Airport Authority, based on conceptual site development plans, the project is projected to employ more than 1,200 construction workers, create 7,000 direct and indirect permanent positions, and generate \$250 million in private investment.

Black Dog Hollow/Fredericktown Coal Refuse Pile Reclamation Project – Currently Tabled

Status: Preliminary OSMRE approval (5/24/16) - OSMRE final approval ATP issued (12/6/16) but currently tabled due to issues with storm water resource plan permits

Location: Washington County

Requested AML Pilot Funding: None – Previously requested \$2 million

Additional Funding: N/A

AML Site Info: Priority 2 unreclaimed and previously reclaimed

Project Partners: East Bethlehem Township, Hobo Ventures Inc.

Update: Project currently tabled and will not use FY 2016 AML Pilot funds

This project was proposed to reclaim the abandoned Fredericktown Coal Refuse Pile, which is located within 500 feet of 60 homes. The 45-acre coal refuse pile, which has steep, unstable slopes and severely eroded channels, will be regraded to create more stable slopes. It will also be compacted and capped with clean alkaline fill to allow for successful revegetation and recreational use as a public park. Portions of the site will be made available for future industrial development and plans are underway to establish a Recreational and Greenspace Public Park Development area to promote recreational use and tourism. This project is currently tabled due to issues with SWRP permits but may request Pilot funds again in future grants.

Bowman's Shaft, Pioneer Tunnel Mine Headframe & Hoist Preservation Project

Status: Preliminary OSMRE approval (5/24/16) - OSMRE final approval ATP issued (10/19/16) - Construction started (12/21/16)

Location: Schuylkill County

Requested AML Pilot Funding: \$206,007

AML Site Info: Priority 1, 2, and 3; unreclaimed and previously reclaimed

Project Partners: Ashland Community Enterprises, SDL Construction, Keystone Anthracite

³ Previously reported as Airport Authority World Trade Center Business Park

Update: Requested AML Pilot funding decreased from \$50,000 to \$206,007 million and decreased traditional Title IV AML funds from \$119,000 to none

This project is painting and erecting a salvaged headframe and hoisting drum to exhibit at the Pioneer Tunnel Tourist Coal Mine and Museum in Ashland Borough, PA. The mining artifacts were recovered from the North Mahanoy Colliery, Park No. 1 Shaft in 2015. The exhibit will increase tourism and educate visitors about the heritage of anthracite mining. According to the owners and operators of the Pioneer Tunnel Coal Mine and Steam Train Museum, the attraction sells approximately 30,000 tickets each season.

Cresson Acid Mine Drainage Treatment Plant – Added since the FY 16 – FY 17 Pilot Report

Status: Preliminary OSMRE approval (7/13/18) - OSMRE final approval ATP issued (7/23/18)

Location: Cambria County

Requested AML Pilot Funding: \$2 million

Additional Funding: \$671,212 from traditional Title IV AML funds to address physical hazards plus additional funds from PA Capital Budget Public Improvement project funding

AML Site Info: Priority 2 and Priority 3 unreclaimed and previously reclaimed

Project Partners: Susquehanna River Basin Commission

Update: Project added to FY 2016 AML Pilot grant due to the availability of funding

This project will construct an active AMD treatment plant that will create 3 jobs and restore 21.5 miles of stream that can be used as a recreational fishery. Additionally, the project will drill 2 new wells to provide water to 2 residences and construct 1.5 miles of water line that will service 23 residences and a medical office.

Eckley/Hazleton Rail Trail/Hazel Creek Cleanup

Status: Preliminary OSMRE approval (5/24/16) - OSMRE final approval ATP issued (10/31/16) – Phase 1 construction (11/17/16) and Phase 2 construction (8/31/17)

Location: Luzerne County

Requested AML Pilot Funding: \$1.6 million

Additional Funding: \$67,223 from traditional Title IV AML funds to address physical hazards and \$902,000 from other sources

AML Site Info: Priority 2 and Priority 3 unreclaimed

Project Partners: Greater Hazleton Partnership, Greater Hazleton Chamber, PA Dept. of Conservation and Natural Resources, PennDOT

Update: Requested AML Pilot funding decreased from \$2 million to \$1.6 million and decreased traditional Title IV AML funds from \$800,000 to \$67,223

This project is reclaiming a 70-acre abandoned surface mine with 2,500 linear feet of dangerous highwall. Additionally, it will reconstruct wetlands and 3,200 feet of stream. The project will facilitate an extension of the Greater Hazleton Rails to Trails system to connect with the Eckley Miner's Village Historic Park, and improve seven miles of streams in Hazel Creek and Black Creek making them available for fishing and other recreational uses. This will increase tourism to the area, which currently has over 35,000 annual visitors, and create opportunities for more visitor attractions for fishing, hiking, and sightseeing. Based on the seven miles of improved stream, the yearly economic benefit is estimated at \$230,000.

Green Mountain Discharge/Audenreid Tunnel Discharge – Currently Tabled

Status: Preliminary OSMRE approval (5/24/16) but is currently tabled by the state pending further negotiation with partners

Location: Schuylkill & Luzerne Counties

Requested AML Pilot Funding: None – Previously requested \$2.5 million

Additional Funding: N/A

AML Site Info: Priority 2 previously reclaimed

Project Partners: Community Area New Development Organization, Eastern Middle Anthracite Regional Recovery, Eastern Pennsylvania Coalition for Abandoned Mine Reclamation, Schuylkill County Conservation District, Catawissa Creek Restoration Association, Hazleton City Authority, Natural Land Trust, Butler Enterprises, Schuylkill/Columbia County Conservation Districts, Catawissa Creek Restoration Association, Hazleton Environmental, Schumacher Engineering

Update: Project currently tabled and will not use FY 2016 AML Pilot funds

This project was proposed to treat the mine water discharge from the Green Mountain Tunnel and improve the treatment of water from the Audenreid Tunnel. This will result in the restoration of 24 miles of Catawissa Creek for recreation use, as well as deliver potable water to the Hazleton City Authority that will increase the available safe yield of the area's water supply. Additionally, geothermal energy will be recovered from the raw water for cooling and heating the water treatment buildings. This project is currently tabled by the state pending further negotiation with partners but may request Pilot funds again in future grants.

Pine Grove North/Lawrence Township Waterline Extension Project

Status: Preliminary OSMRE approval (5/24/16) - OSMRE final approval ATP issued (8/2/18)

Location: Clearfield County

Requested AML Pilot Funding: \$4.1 million

Additional Funding: \$33,172 from traditional Title IV AML funds to address physical hazards

AML Site Info: Priority 1 and Priority 2 unreclaimed

Project Partners: Lawrence Township & Clearfield Municipal Authority

Update: Requested AML Pilot funding increased from \$2 million to \$4.1 million and decreased traditional Title IV AML funds from \$800,000 to \$33,172

This project will construct a 9-mile waterline extension to service 96 homes and businesses in Lawrence Township which currently have wells/water supplies that are impacted or degraded by former surface and underground coal mining operations. The waterline extension will provide potable water to a rural area and increase the potential for industrial development, new single family dwellings, and small businesses.

Pittsburgh Botanic Garden

Status: Preliminary OSMRE approval (5/24/16) - OSMRE final approval ATP issued (10/13/16) – Construction started (2/28/17)

Location: Allegheny County

Requested AML Pilot Funding: \$988,040

Additional Funding: \$216,040 from traditional Title IV AML funds to address physical hazards

AML Site Info: Priority 2 and Priority 3 unreclaimed and previously reclaimed

Project Partners: Allegheny County, Pennsylvania Infrastructure Investment Authority, North Fayette Township, American Chestnut Foundation

Update: Requested AML Pilot funding increased from \$500,000 to \$988,040

This project will address a dangerous highwall, mine subsidence and acid mine drainage while expanding the Pittsburgh Botanic Garden (PBG). When completed, the PBG will include 18 distinct gardens, a visitor's center, an amphitheater for outdoor concerts and performances, and serve as a center for botanic research. The PBG reported 10,000 visitors in the first year of operation (2016), and 30,000 visitors in 2018. Administrators of the PBG project a 5% to 7% annual increase in visitation over the next 5 years as the site is further developed and the AML hazards are removed. Additionally, they estimate that the facility will directly and indirectly create 1,200 jobs and generate up to \$88 million in revenue within 10 years of operation.

Point Stadium Discharge, Mine Drainage Treatment & Mine Pool Geothermal Project – Currently Tabled

Status: Preliminary OSMRE approval (5/24/16) - OSMRE final approval ATP issued (1/27/17) but currently tabled due to withdrawal from the project by a key partner

Location: Cambria County

Requested AML Pilot Funding: None – Previously requested \$2 million

Additional Funding: N/A

AML Site Info: Priority 3 unreclaimed

Project Partners: Conemaugh Hospital, Foundation for PA Watersheds, Stoneycreek-Conemaugh River Improvement Project, Cambria County Conservation District, Pennsylvania Environmental Council, Lift Johnstown, Penelec Sustainable Energy Fund, eCap Network, City of Johnstown

Update: Project currently tabled and will not use FY 2016 AML Pilot funds

This project was proposed to improve two miles of stream impacted by acid mine drainage and treat or eliminate discharge from Point Stadium in downtown Johnstown. This project will either provide treatment of the discharge or use the treated water and/or the mine pool as an industrial water supply or as a geothermal energy source. Public facilities in Johnstown could use the geothermal energy to effectively reduce their heating and cooling costs. This project is currently tabled due to withdrawal from the project by a key partner but may request Pilot funds again in future grants.

Potts Run Passive AMD Treatment System (Boardman) – Added since the FY 16 – FY 17 Pilot Report

Status: Preliminary OSMRE approval (3/2/18) - OSMRE final approval ATP issued (4/12/18)

Location: Clearfield County

Requested AML Pilot Funding: \$1.5 million

Additional Funding: \$1 million from traditional Title IV AML funds to address physical hazards

AML Site Info: Priority 2 and Priority 3 unreclaimed

Project Partners: Trout Unlimited, Knox Twp., Clearfield County Conservation District, Clearfield Creek Watershed Association, Hedin Environmental

Update: Project added to FY 2016 AML Pilot grant due to the availability of funding

This project will construct a passive treatment system to address acid mine drainage (AMD) that impacts over three miles of recreational trout fishery. Presently these waters are experiencing an estimated loss in recreation value of \$102,393 annually. Improvements from this project will restore this loss and value and also increase safety, property values, and quality of life for 20 households in the village of Boardman. Potential future development of the surrounding land includes building campsites or home sites.

Powderly Creek NE Underground Mine Fire and Economic Development Project

Status: Preliminary OSMRE approval (5/24/16) - OSMRE final approval ATP issued (8/23/16) - Construction started (8/23/16)

Location: Lackawanna County

Requested AML Pilot Funding: \$2 million

Additional Funding: \$6.4 million from traditional Title IV AML funds to address physical hazards

AML Site Info: Priority 1, 2, and 3; unreclaimed and previously reclaimed

Project Partners: Landowner, Carbondale City, Carbondale Enterprise Development Zone

Update: Decreased traditional Title IV AML funds from \$8 million to \$6.4 million

This project will extinguish the Powderly Creek underground mine fire just outside Carbondale. Additional AML features adjacent to the mine fire area will be reclaimed in order to create conditions suitable for future commercial/industrial development. Air quality will improve with the extinguishment of the fire and a total of 108 acres of AML will be reclaimed. Once completed, over 100 acres of previously undevelopable land will be available for future use. The property is within two miles of two separate interchanges from Route 6 which is attractive for commercial or industrial facilities. There is also the potential for residential expansion to increase the tax base of Carbondale. The additional lands will allow for more athletic fields or parks to increase the quality of life in economically depressed communities.



Powderly Mine Underground Fire Site
Photo Credit: Pennsylvania Department of Environmental Protection

Spaces Corners South/Rayburn Township Waterline Extension Project

Status: Preliminary OSMRE approval (5/24/16) - OSMRE final approval ATP issued (8/11/16) - Construction started (10/13/16) - Project completed in July 2017

Location: Armstrong County

Requested AML Pilot Funding: \$608,472

Additional Funding: \$32,025 from traditional Title IV AML funds to address physical hazards and \$5 million from other sources

AML Site Info: Priority 2 unreclaimed

Project Partners: Rayburn Township Joint Municipal Authority, Pennsylvania Infrastructure Investment Authority

Update: Project has been completed, requested AML Pilot funding decreased from \$640,000 to \$608,472

The Rayburn Township Joint Municipal Authority has constructed a 9-mile waterline to 160 residences, of which 118 have wells or water supplies impacted by abandoned mine land runoff. With the project completed, it is expected to stabilize the local tax base, and increase the potential for industrial and small business development and the construction of new single family homes.

Sproul State Forest/Fran Contracting Surface Mine Restoration Project

Status: Preliminary OSMRE approval (5/24/16) - OSMRE final approval ATP issued (12/15/16)

Location: Clinton County

Requested AML Pilot Funding: \$3.5 million

Additional Funding: \$3.6 million from traditional Title IV AML funds to address physical hazards

AML Site Info: Priority 3 unreclaimed

Project Partners: Department of Conservation & Natural Resources, Kettle Creek Watershed Association, Trout Unlimited, East Keating & Noyes Townships, Western Clinton Sportsman Club, PA Fish & Boat, Bureau of Forestry (Sproul State Forest), American Chestnut Foundation

Update: Decreased traditional Title IV AML funds from \$4 million to \$3.6 million

This project will reclaim the Camp Run No. 2 AML site in Sproul State Forest and restore water quality in the Rock and Camp Run tributaries of Cooks Run. Acid forming materials will be excavated and removed or treated on site to neutralize acidity. The reclaimed site will be reforested to bring the land and water back to pre-mining conditions, allowing residents and visitors to hunt, fish, hike, sightsee, and use ATVs.

Tamaqua City Revitalization and Improvement Zone – Currently Tabled

Status: Preliminary OSMRE approval (5/24/16) - OSMRE final approval ATP issued (3/28/17) but is currently tabled by the state pending further negotiation with partners

Location: Schuylkill County

Requested AML Pilot Funding: None – previously requested \$3.6 million

Additional Funding: N/A

AML Site Info: Priority 2 and Priority 3 unreclaimed and previously reclaimed

Project Partners: City, County, PA Department of Community & Economic Development, PennDot, Schuylkill Headwaters, St. Luke's Hospital, Lehigh Anthracite/BET Associates, Tamaqua City Revitalization and Improvement Zone Authority, Tamaqua Area Community Partnership, Tamaqua Industrial Development Enterprises

Update: Project currently tabled and will not use FY 2016 AML Pilot funds

This project was proposed to remove AML refuse piles and re-grade approximately 19 acres for use as a riparian/park setting (including a part of a proposed rail-trail system). An existing haul road will be improved and will later become a segment of the planned Tamaqua Bypass to directly alleviate traffic congestion and improve access to the area, which will spur new economic growth. Future economic use of the area as part of a broad feasibility study includes a cancer treatment center, meeting and conference space, and geothermal infrastructure. This project is currently tabled by the state pending further negotiation with partners but may request Pilot funds again in future grants.

TASA Airfield North (Zelienople Municipal Airport) – Added since the FY 16 – FY 17 Pilot Report

Status: Preliminary OSMRE approval (7/25/17) - OSMRE final approval ATP issued (9/19/17)

Location: Beaver County

Requested AML Pilot Funding: \$2.5 million

Additional Funding: \$2.3 million multimodal grant through PennDOT and \$700,000 from Zelienople Airport

AML Site Info: Priority 2 and Priority 3 unreclaimed

Project Partners: Zelienople Airport, State Legislators, Beaver County Conservation District, PA Fish & Boat Commission, PennDOT Bureau of Aviation, PennDOT Engineering District 11-0

Update: Project added to FY 2016 AML Pilot grant due to the availability of funding

This project is proposed to reclaim an AML site with additional benefit to improving safety to the runway at the Zelienople Municipal Airport and the adjacent state roadway (Route 288). Benefits to the road include improved sightlines and reduced risk of loss of life if cars ran off the road. The airport will see benefits of safer take-off and landing with the relocation of a water filled impoundment that is frequented by birds. Additionally, these improvements will permit the runway closest to the roadway to operate at night and increase the number of flights that can use the airport. This will allow the Pittsburgh Jet Center to maintain a presence at the airport which plans to add 25 high paying jobs in the next 18 months.

Tresckow Surface Mine Restoration Project

Status: Preliminary OSMRE approval (5/24/16) - OSMRE final approval ATP issued (1/24/17)

Location: Carbon & Schuylkill Counties

Requested AML Pilot Funding: \$4.25 million

Additional Funding: \$1.35 million from traditional Title IV AML funds to address physical hazards

AML Site Info: Priority 1, 2, and 3; unreclaimed and previously reclaimed

Project Partners: Community Area New Development Organization, PennDot, Tresckow, Kline Twp Authority

Update: Project modified to no longer involve Beaver Brook. Requested AML Pilot funding decreased from \$5 million to \$4.25 million and decreased traditional Title IV AML funds from \$7 million to \$1.35 million

This project will backfill a strip pit using mine spoil materials obtained on-site to reclaim 298 acres for future industrial and commercial development. A dedicated access road will also be constructed to the McAdoo Industrial Park. The project will relocate and significantly upgrade a Kline Township Municipal Authority water line to provide enhanced and reliable water service to 400 residential customers in the village of Tresckow.

Wingfield Pines Passive AMD Treatment Inflow Reconstruction – Added since the FY 16 – FY 17 Pilot Report

Status: Preliminary OSMRE approval (3/1/18) - OSMRE final approval ATP issued (6/20/18)

Location: Allegheny County

Requested AML Pilot Funding: \$588,555

AML Site Info: Priority 1, 2, and 3; unreclaimed and previously reclaimed

Project Partners: Allegheny Land Trust

Update: Project added to FY 2016 AML Pilot grant due to the availability of funding

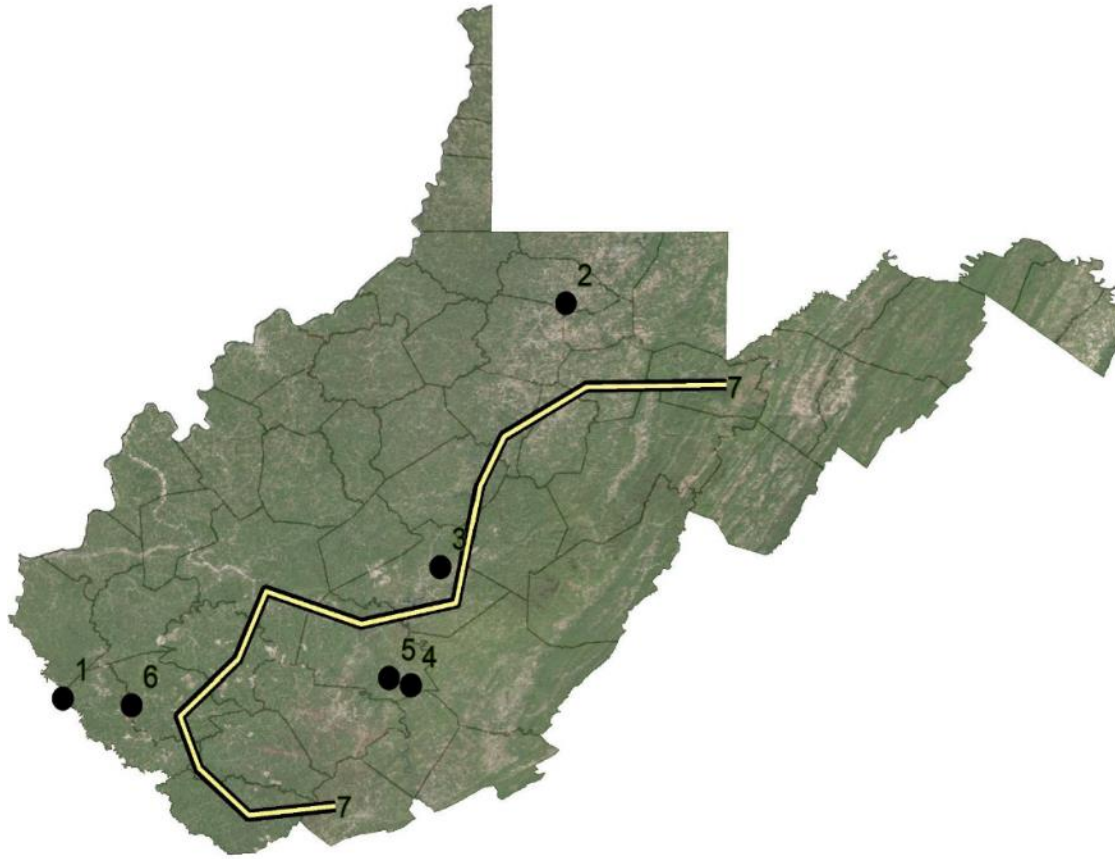
This project will reconstruct a deep mine collection structure to restore inflow to the Wingfield Pines passive treatment system and improve a local ecological park that is used for recreation and education. The park is used as an environmental laboratory for students from high-school through college to explore and study. The waterways and one-mile loop trail are frequently used by local hikers, bikers, and boaters. With the completion of this project, this site will provide long term benefit to the community through the uses of outdoor recreation and education.

FY 2016 West Virginia

Since the previous AML Pilot Report, West Virginia has submitted two additional projects applications to use FY 2016 Pilot funds for a total of eight projects that have received OSMRE's preliminary approval. One of the eight project has been canceled by the WV Office of Abandoned Mine Lands and Reclamation. Seven projects are currently active and have been awarded a portion of the \$30 million from the FY 2016 AML Pilot grant for WV. If applicable, changes in active projects and revisions to pilot funding requests from the previous Pilot Report are marked as an "Update" for each project in the list below.

The seven active FY 2016 AML Pilot projects across West Virginia include two food production projects, one outdoor recreation/conservation/education project, one industrial park project, one infrastructure development project, and two water supply replacement projects. These projects will result in estimated economic outcomes that include: the installation of 17.3 miles of new waterline that serve more than 200 homes and businesses; bring thousands of visitors to new attractions; construction of new infrastructure (e.g. utilities, roadways, and broadband service); the creation of over 6,200 new full-time jobs in the region; and the construction of eleven new building pads for future businesses. The seven active pilot projects have the potential to leverage an additional \$1 for every \$1 of AML Pilot Program funding from public and private economic development funds. Additional information can be found through the [West Virginia Department of Environmental Protection](#).

West Virginia FY 2016 Pilot Projects



Map Index	Project Name	County
1	Aquaponics on AML: Fish, Vegetables, Renewables, and Mine Air/Water	Mingo
2	I-79 Technology Park Mine Reclamation and Economic Expansion	Marion
3	Patriot Guardens Golden Delicious Apple	Nicholas
4	Danese PSD Crickmer Road Waterline Extension	Fayette
5	Danese PSD Highland Mountain Waterline Extension	Fayette
6	WV Elk Restoration Project	Logan
7	Mountain State Broadband Expressway	Multi

Map of active preliminarily approved projects receiving FY 2016 AML Pilot funds in West Virginia

Golden Delicious Apple Project (Patriot Gardens)

Status: Preliminary OSMRE approval (6/17/16) - OSMRE final approval ATP issued (8/13/17) – Construction started (8/19/17)

Location: Clay, Nicholas, and Webster Counties

Requested AML Pilot Funding: \$5.3 million

Additional Funding: \$2.5 million from other sources

AML Site Info: Priority 2 and Priority 3 unreclaimed

Project Partners: West Virginia National Guard, Central Appalachia Empowerment Zone, USDA, Pardee Natural Resources, West Virginia State University Extension, ERP Compliant Fuels

The Golden Delicious Apple Project is the most extensive project proposal in West Virginia approved for AML Pilot funding. The West Virginia National Guard will partner with multiple organizations to reintroduce the Golden Delicious Apple Tree to Clay, Nicholas, and Webster Counties and set up a series of fruit tree orchards on abandoned mine lands to diversify the local economy. This project will plant and maintain approximately 97,000 trees and construct a 50,000 square feet processing and storage facility, commercial greenhouses, and a research station. Based on projects of this type in other states, it can be projected that approximately 550 full-time permanent jobs may be associated with the project when in full production.



Planted Apple Trees on Reclaimed Mine Land

Aquaponics on an AML site

Status: Preliminary OSMRE approval (8/12/16) - OSMRE final approval ATP issued (4/16/18)

Location: Mingo County

Requested AML Pilot Funding: \$3.6 million

Additional Funding: \$25,000 in-kind, \$75,000 local, and \$120,000 from other Federal funds

AML Site Info: Priority 1, 2, and 3; unreclaimed

Project Partners: Mingo County Redevelopment Authority, Coalfield Development (Refresh Appalachia and Rewire Appalachia.)

The Mingo County Redevelopment Authority will partner with Refresh Appalachia to develop an advanced aquaponic systems. This system will produce commercial quantities of fish and vegetables while utilizing renewable energy and safe free mine water for facility power and temperature regulation. Jobs projected to be directly created include 13 full-time employees (primarily in food production and distribution jobs) and 80 temporary employees (e.g. construction jobs, solar technicians). Indirect benefits include serving 15 clients via university collaborations, educational outreach, and the potential to conduct business with over 1,000 customers and 10 suppliers.

Crickmer Waterline Extension

Status: Preliminary OSMRE approval (8/12/16) - OSMRE Final Approval ATP issued (11/29/16) – Construction started (10/9/17)

Location: Fayette County

Requested AML Pilot Funding: \$829,591

AML Site Info: Priority 2 unreclaimed

Project Partners: ARC Region 4, Danese Public Service District, E.L. Robinson Engineering Co.

Update: Requested AML Pilot funding increased from \$829,591 to \$944,208.

The Danese Public Service District will provide water service to 23 customers by installing 4.3 miles of various waterlines because wells in the area have been impacted by pre-law mining practices. This project will provide clean water to homeowners which will help to stabilize the local tax base and improve property values.

Highland Mountain Waterline Extension

Status: Preliminary OSMRE approval (8/12/16) - OSMRE Final Approval ATP issued (11/29/16) – Construction started (10/9/17)

Location: Fayette County

Requested AML Pilot Funding: \$2.6 million

AML Site Info: Priority 2 unreclaimed

Project Partners: ARC Region 4, Danese Public Service District, E.L. Robinson Engineering Co.

Update: Requested AML Pilot funding decreased from \$3.1 million to \$2.6 million.

The Danese Public Service District will install 13 miles of various waterlines, a pressurized tank, and an 88,000 gallon storage tank. This project will provide clean water to approximately 188 homeowners which will help to stabilize the local tax base and improve property values.

I-79 Technology Park

Status: Preliminary OSMRE approval (7/13/16)

Location: Marion County

Requested AML Pilot Funding: \$4 million

Additional Funding: \$575,000 from the traditional AML funds to address the environmental hazards and an additional \$12 million from private and public sources

AML Site Info: Priority 1, 2, and 3; unreclaimed

Project Partners: High Technology Foundation, NOAA, Marion County Commission, Triad Engineering, March-Westin Company, First Energy Corporation, Orange Construction, Zayo Group

Update: Project remains on track after the bankruptcy of a project partner has been rectified with the sale of unrelated assets.

The Marion County Commission will extend the existing road infrastructure in the I-79 Technology Park. The road expansion will make industrial-sized building pads more accessible for use. The scope of the work will include engineering services, subsurface investigation and stabilization, earthwork, storm drainage construction, erosion and sediment control, paving, and extension of utilities. When completed, the project will have constructed 11 building pads and 10,000 linear feet of utilities (e.g. roadways, power lines) which will attract Federal anchors to the area. It is also projected to create 5,700 full-time, permanent jobs.

Mountain State Broadband Expressway Phase 1 – Added since the FY 16 – FY 17 Pilot Report

Status: Preliminary OSMRE approval (10/5/17) - OSMRE Final Approval ATP issued (7/31/18)

Location: Field recon in progress to determine sites of broadband towers across various counties

Requested AML Pilot Funding: \$12.5 million

Additional Funding: \$18 million from other sources

AML Site Info: To be determined based on where tower locations are needed

Project Partners: Region VII Planning Council, Shentel Comm., Micrologic Inc., Microsoft. Inc.

Update: Project added to FY 2016 AML Pilot grant due to the availability of funding

This project will build an open-access fiber/wireless hybrid network of fiber linked high capacity telecommunication towers creating a foundational backbone running north and south through eastern WV. Planned towers will be dispersed along the path on AML sites and provide affordable broadband service to rural areas which mostly lack access to the internet. When completed, this project will impact 28 counties in WV including Barbour, Boone, Braxton, Clay, Fayette, Gilmer, Grant, Greenbrier, Kanawha, Lincoln, Logan, McDowell, Mercer, Mineral, Mingo, Nicholas, Pocahontas, Preston, Raleigh, Randolph, Roane, Summers, Taylor, Tucker, Upshur, Wayne, Webster, and Wyoming.

Sullivan Industrial Park – Currently Tabled

Status: Preliminary OSMRE approval (8/12/16) but has been tabled by the WV Office of Abandoned Mine Lands and Reclamation (8/7/17) and is awaiting further evaluation by the WV Department of Environmental Protection (WVDEP).

Location: Raleigh County

Requested AML Pilot Funding: None – Previously requested \$12 million

Additional Funding: N/A

AML Site Info: Priority 2 unreclaimed

Project Partners: Beaver Coal Company, WV National Guard, Raleigh County Commission

Update: Project has been tabled by the WV Office of Abandoned Mine Lands and Reclamation and will not use FY 2016 AML Pilot funds

The Sullivan tract is a 230 acre AML site with two unreclaimed highwalls. In conjunction with the remediation and development of the site, an additional 10 acres will be donated to the West Virginia National Guard (WVNG) to create a flagship site for the Guard's Special Repair Program. This program currently employs dozens of workers that win projects from the Department of Defense to repair and maintain assets. The end use will be an industrial park in close proximity to I-64 and I-77 that could attract industrial and defense related business to the area. It is projected the WVNG will create 250 full-time civilian jobs within 5 years of project completion. This project has been tabled by the WV Office of Abandoned Mine Lands and Reclamation but may request Pilot funds again in future grants.

WV Elk Restoration Project Phase 1 – Added since the FY 16 – FY 17 Pilot Report

Status: Preliminary OSMRE approval (10/21/17) - OSMRE Final Approval ATP issued (3/27/18)

Location: Logan and Mingo Counties

Requested AML Pilot Funding: \$1 million

AML Site Info: Priority 1 unreclaimed

Project Partners: RMEF, NWTC, TCF, NFWF, Knobloch Foundation

Update: Project added to FY 2016 AML Pilot grant due to the availability of funding

This is a multi-phase project to restore the extirpated elk species in WV with the goal of enhancing eco-tourism activities and substantiating long term positive economic benefits to the depressed southern coal fields region. Phase 1 involves construction of a multi-level viewing deck and a storage facility. Later phases will include construction of a visitor center and parking lot. The project is expected to create jobs and welcome thousands of visitors per year. This is based on the success of elk restoration programs in surrounding states, particularly the Pennsylvania Elk Country Visitor Center.

IV. Implementation of the FY 2017 AML Pilot Program

OSMRE facilitated a meeting on June 7, 2017, in Pennsylvania with state AML Program staff from Kentucky, Pennsylvania, West Virginia, Alabama, Ohio, and Virginia to introduce the program to the new states as well as discuss changes and clarifications from the previous year. OSMRE released the *FY 2017 AML Pilot Guidance Document* to stakeholders on August 31, 2017. This guidance document was developed by OSMRE to assist the states in their selections of projects and reflected minor improvements from the previous year. The guidance document outlined general criteria by which potential projects should be evaluated for eligibility and successful selection, as well as suggested means by which projects could meet the economic and community development nexus criteria. Between November 2017 and February 2018, OSMRE awarded the FY 2017 AML Pilot grants (\$25 million to Kentucky, Pennsylvania and West Virginia and \$10 million to Alabama, Ohio, and Virginia).

FY 2017 Kentucky

Kentucky submitted a total of eight projects to use FY 2017 AML Pilot Funds that have all received preliminary approval by OSMRE and are eligible to use a portion of the available \$25 million. Two of these projects have since been tabled by the state. Located across six counties in eastern Kentucky, the six active preliminarily approved AML Pilot projects include, three infrastructure development projects, one industrial construction project, one visitor attraction project, and one professional development/training project. Projects were selected for AML Pilot funding based on their potential to create long-term economic benefits in local coal communities. These projects will result in estimated outcomes that include: increased tourism by attracting 27,000 additional visitors to the region; workforce training for an additional 150 -200 students annually; the construction of 16 miles of new water and gas lines; nearly 1,000 new jobs created; and broader impacts that will yield infrastructure development, stronger local businesses, and restoration of public lands. In addition, the pilot projects have the potential to leverage an additional \$1 for every \$1 of AML Pilot Program funding from public and private economic development funds. Additional information can be found through the [Kentucky Energy and Environment Cabinet](#).



Map of active preliminarily approved projects receiving FY 2017 AML Pilot funds in Kentucky

Eastpark Industrial Park Infrastructure & Development

Status: Preliminary OSMRE approval (7/13/18)

Location: Boyd County

Requested AML Pilot Funding: \$4 million

Additional Funding: \$14.2 million from other sources

AML Site Info: Priority 3 previously reclaimed

Project Partners: The Northeast Kentucky Regional Industrial Authority, The Ashland Alliance, and Boyd, Carter, Elliott, Greenup, and Lawrence counties

This project involves site preparation for the planned 1.8 million square foot Braidy Industries Aluminum Mill facility. Specifically, the site preparation activities designated for AML Pilot funding consist of installing a grid of aggregate and concrete support piers and columns, which extend down through mine spoil to competent strata, to support the weight of the aluminum mill. This project is estimated to create approximately 1,000 temporary construction jobs and another 550 full-time permanent jobs.



Proposed Braidy Project Site Development Area

Coalfields Industrial Park Gas Supply

Status: Preliminary OSMRE approval (6/18/18)

Location: Perry County

Requested AML Pilot Funding: \$900,000

Additional Funding: \$2 million from other federal sources and \$32,000 from the City of Hazard

AML Site Info: Priority 3 unreclaimed

Project Partners: City of Hazard, Economic Development Administration, Coalfields Regional Industrial Authority

This project will provide natural gas to the Coalfields Regional Industrial Park by installing approximately six miles of six inch natural gas pipe line from a wellhead area in central Perry

County to the Industrial Park. The Industrial Park serves a five-county area, providing sites for manufacturing concerns and is owned and operated by the Coalfields Regional Industrial Authority. This 236-acre Industrial Park also has good highway access, public water, public sewer and electricity from Kentucky Power Company. With the addition of natural gas service, this project will attract new industries to the industrial park that have the potential to bring thousands of jobs to the area.

East Kentucky Advanced Manufacturing Institute (Phase 2)

Status: Preliminary OSMRE approval (6/29/18)

Location: Johnson County

Requested AML Pilot Funding: \$1 million

AML Site Info: Priority 3 unreclaimed

Project Partners: Kentucky Cabinet for Economic Development, Shaping Our Appalachian Region, One East Kentucky, Eastern Kentucky Concentrated Employment Program, Lockheed Martin, and Vincennes University

This project is phase 2 of the East Kentucky Advanced Manufacturing Institute (eKAMI) that used AML Pilot funding in FY 2016. Phase 1 has been developing a training center that provides advanced manufacturing training on computer numeric control (CNC) machines for up to 100 students annually. FY 2017 AML Pilot funds are being used to improve site development surrounding the eKAMI building including correcting site drainage issues, improving access surrounding the building, increased parking (33 to 176 spots), and site grading activities. These site improvements will result in protection of the facility itself, accommodate increased traffic to the building, and provide the ability for further future development in support of the EKAMI program. With the increased space for parking, the number of students trained annually is estimated to increase by 150 – 200.

Historic Stearns Downtown Revitalization Project

Status: Preliminary OSMRE approval (9/25/18)

Location: McCreary County

Requested AML Pilot Funding: \$1.1 million

Additional Funding: \$4.65 million from other sources

AML Site Info: Priority 1, 2, and 3; unreclaimed and preciously reclaimed

Project Partners: McCreary County Heritage Foundation

This project will renovate and revitalize the Big South Fork Scenic Railway in Stearns, Kentucky. AML Pilot funding will be used to remove/replace rail road tracks, ties, and switches; drainage improvements; and provide locomotive upgrades. Other funding will cover rehabilitation of existing buildings as a museum, visitor center, and bed and breakfast; reconstruction of a restaurant and theater; and improvements to the historic districts (sidewalks, drainage, paving, signs, and amenities). In total, these improvements are projected to result in an additional 61 full time and 14 part time positions and increase the number of annual visitors by 27,000 after three years.

Water System Controls and Raw Water Modifications

Status: Preliminary OSMRE approval (2/21/18)

Location: Martin County

Requested AML Pilot Funding: \$2.25 million

Additional Funding: \$1 million from traditional Title IV AML funds to address physical hazards
AML Site Info: Priority 2 unreclaimed
Project Partners: Martin County Water District

This project will install a secondary raw water intake in the Tug Fork River and rehabilitate one of three water treatment plant clarifier/filters to provide improved water quality and redundancy for the local water supply. Piping, pumps, and controls will be upgraded to provide for this second intake. The raw water transmission main pipe (16 inch) will be extended 3,500 feet from the Crum reservoir to the existing water treatment plan. The additional intake and filter rehabilitation will improve water quality to 3,550 customers and may serve as a means to attract new business and industry to the region.

Waterline Extension and Waste Water Treatment Facility for Federal Prison at Roxana

Status: Preliminary OSMRE approval (7/31/18)

Location: Letcher County

Requested AML Pilot Funding: \$4.5 million

Additional Funding: \$1 million from traditional Title IV AML funds to address physical hazards and \$7 million from other sources

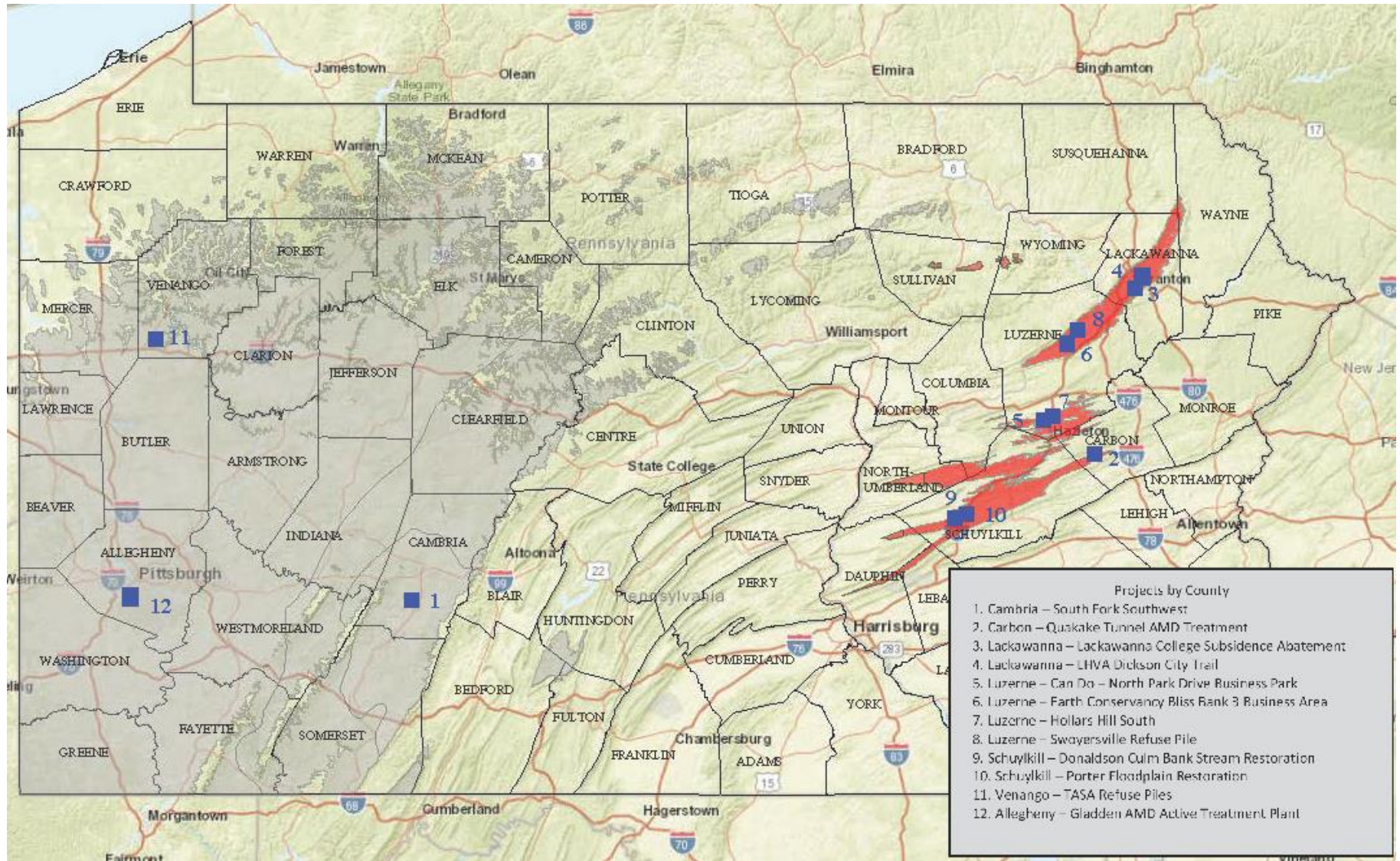
AML Site Info: Priority 1, 2, and 3; unreclaimed and previously reclaimed

Project Partners: Letcher County Water and Sewer District (LCWSD)

This project will involve the construction of a waste water treatment plan and 50,000 linear feet of waterline extension to support the construction and operation of an 800 acre Federal correction facility in Roxana, Kentucky. The facility will house 1,216 inmates and employ 300 full-time staff. It is estimated that the increase in employment and population should inject \$3 to \$4 million annually into the local community. When completed, this project is expected to increase water purchased from Knott County by 246,000 gallons which would generate \$289,000 in revenue for the county.

FY 2017 Pennsylvania

Pennsylvania submitted a total of 12 projects to use FY 2017 AML Pilot Funds that have all received preliminary approval by OSMRE and are eligible to use a portion of the available \$25 million. Located in 7 counties across Pennsylvania, the 12 preliminarily approved AML Pilot projects include 5 outdoor recreation projects, 2 industrial construction projects, 2 community development projects, 2 multi-purpose projects, and 1 higher education project. Projects were selected for AML Pilot funding based on their potential to create long-term economic benefits in local coal communities. These projects will result in estimated outcomes that include: increased tourism by attracting 200,000 additional visitors to the region; new opportunities for 3900 students; the construction of 18.5 miles of trails; 1750 - 2300 new jobs created; and broader impacts that will yield infrastructure development, stronger local businesses, and restoration of public lands. In addition, the pilot projects have the potential to leverage an additional \$2 for every \$1 of AML Pilot Program funding from public and private economic development funds. Additional information can be found through the [Pennsylvania Department of Environmental Protection](#).



Map of active preliminarily approved projects receiving FY 2017 AML Pilot funds in Pennsylvania

Hollars Hill South AML – Cranberry Creek Gateway Project

Status: Preliminary OSMRE approval (3/2/18) - OSMRE Final Approval ATP issued (6/27/18)

Location: Luzerne County

Requested AML Pilot Funding: \$1 million

Additional Funding: \$1.7 million from traditional Title IV AML funds to address physical hazards

AML Site Info: Priority 1, 2, and 3; unreclaimed and previously reclaimed

Project Partners: Can Do Inc. and Pagnotti Enterprises Inc.

This project will reclaim and enhance 35 acres of abandoned mine land for development by placing, grading, and stabilizing several feet of topsoil for the Cranberry Creek Gateway Project portion of the Hollars Hill South community development project. In its entirety, the Hollars Hill South Project is a 366 acre community development project that includes: a 5,000-seat stadium, sports dome/ice box, town center, commercial/retail space, low medium and high density residential complexes, community ballfield complex, wildlife sanctuary/botanical garden and greenways. Based on similar projects, 500 to 1,000 permanent full time positions are expected when completed.



Design Plan of the Hollars Hill South AML – Cranberry Creek Gateway Project

Can Do – North Park Drive Business Park

Status: Preliminary OSMRE approval (3/2/18) - OSMRE Final Approval ATP issued (10/16/18)

Location: Luzerne County

Requested AML Pilot Funding: \$2 million

Additional Funding: \$657,900 from traditional Title IV AML funds to address physical hazards

AML Site Info: Priority 1, 2, and 3; unreclaimed and previously reclaimed

Project Partners: Can Do Inc.

This project will reclaim approximately 65 acres of abandoned mine land including a highwall, dangerous waterbody, and spoil material to prepare the site for development in the Can Do

Industrial Park. At project completion, Can Do is ready to market the site as up to seven property parcels. With this development, 70 – 140 permanent full time jobs are anticipated to be created. Additionally, safety will be improved for 40 residences that are adjacent to the AML site.

Dickson City Trail

Status: Preliminary OSMRE approval (7/13/18)

Location: Lackawanna County

Requested AML Pilot Funding: \$400,000

Additional Funding: \$500,000 from DCNR and \$470,000 from PennDOT

AML Site Info: Priority 1, 2, and 3; unreclaimed and previously reclaimed

Project Partners: Lackawanna Heritage Valley Authority, DCNR, and PennDOT

This project will reclaim 7 acres of AML and construct one mile of trail along the Lackawanna River. This trail will be an extension of the “Lackawanna River Heritage Trail” which aims to create a recreation area that stretches the entire length of the Lackawanna River and eventually connect with the “Delaware and Lehigh Trail” in Wilkes Barre. Currently the Lackawanna River Heritage Trail has 13 miles completed with 4 miles in a design or construction phase. In 2017, the existing portions of the trail saw a total of 315,000 visitors.

Donaldson Culm Bank Stream Restoration Project

Status: Preliminary OSMRE approval (3/2/18) - OSMRE Final Approval ATP issued (9/6/18)

Location: Schuylkill County

Requested AML Pilot Funding: \$2.1 million

Additional Funding: \$4.6 million from traditional Title IV AML funds to address physical hazards, \$918,889 from Growing Greener, \$300,000 from DCED, \$25 million from Williams Companies, and \$500,000 from the National Fish and Wildlife Foundation

AML Site Info: Priority 1, 2, and 3; unreclaimed and previously reclaimed

Project Partners: Frailey Township, Natural Coal Company, YZ-05 Inc., Schuylkill Economic Development Corp., Rausch Creek Lands LR, Olympus Power – Westwood Plant, The Williams Companies Inc., Department of Community and Economic Development

This project will restore a natural flow path to Good Spring Creek and reclaim 60 acres of refuse material that is eroding into the creek near the village of Donaldson in Schuylkill County, PA. This will reduce the sediment load in 16 miles of stream and restore the creek’s ability to support a wild trout fishery which is estimated to generate \$188,000 per year in economic revenue. The corrected stream path will also prevent/reduce future flooding events that have had significant cost to the area in the past in terms of repair expenses and loss of jobs. Forty acres of the reclaimed area will also be converted into a recreation facility with interpretative walking trails, benches, and fishing access areas, which will be utilized by residents in Frailey Township and surrounding areas.

Earth Conservancy Bliss Bank 3 Business Area

Status: Preliminary OSMRE approval (3/2/18) - OSMRE Final Approval - ATP issued (6/27/18)

Location: Luzerne County

Requested AML Pilot Funding: \$2.5 million

Additional Funding: \$526,835 from traditional Title IV AML funds to address physical hazards

AML Site Info: Priority 2 and 3 unreclaimed

Project Partners: Earth Conservancy



This project will connect transportation access to two previously developed areas within the Bliss Bank Business Area though the reclamation 55 acres of abandoned mine land. In addition, 2,000 linear feet of sewer, water, and gas line will be installed. These improvements will accelerate completion of the overall Bliss Bank Project by years, allowing actual development to take place much sooner than anticipated. When all phases are completed, 1,000 permanent full time positions are expected.

Highwall to be reclaimed at the Bliss Bank Project Site

Photo Credit: Pennsylvania Department of Environmental Protection

Gladden AMD Active Treatment Plant and Fishing Run Stream Sealing

Status: Preliminary OSMRE approval (9/25/18)

Location: Allegheny County

Requested AML Pilot Funding: \$6 million

Additional Funding: \$2 million from other sources

AML Site Info: Priority 2 and 3 previously reclaimed

Project Partners: South Fayette Conservation Group

This project will construct an active acid mine drainage (AMD) treatment system that will enable recreational use of 14 miles of Chartiers Creek and 4 miles of Miller Run. The streams will be stocked with trout and accessible via two parks (Meyer Park and Middleton Park). The estimated annual revenue generated from fishing and boating on the 18 miles of stream is \$891,000. The 4 miles of Miller run also flow through the 300 acre Newbury Market Development site and will increase the value of the land for future commercial and residential tenants. The AMD treatment system can also be utilized as an educational tool for local schools and universities.

Lackawanna College Subsidence Abatement

Status: Preliminary OSMRE approval (3/2/18) - OSMRE Final Approval ATP issued (3/15/18)

Location: Lackawanna County

Requested AML Pilot Funding: \$450,000

AML Site Info: Priority 1 and 2 unreclaimed and previously reclaimed

Project Partners: Lackawanna College

This project will fill mine voids to prevent subsidence under the building at 409 Adams Ave. in Scranton, PA that will be used by Lackawanna College to expand their Culinary Arts Program. The expansion will provide classrooms, housing, and dining facilities for the new Culinary Arts Program. It will also provide additional classrooms, administrative offices, conference rooms, and laboratory spaces that will support the operation of existing academic degree and continuing education programs. This overall expansion by Lackawanna College will accommodate over 3,900 students annually and create 66 permanent full time positions, 21 permanent part time positions, 110 non-permanent construction jobs, and 265 indirect positions.

Porter Floodplain Restoration

Status: Preliminary OSMRE approval (3/2/18) - OSMRE Final Approval ATP issued (5/8/18)

Location: Schuylkill County

Requested AML Pilot Funding: \$2 million

Additional Funding: \$200,000 from traditional Title IV AML funds to address physical hazards, \$373,309 from SFPC, \$60,000 from SHA, and \$200,000 from DCNR

AML Site Info: Priority 2 and Priority 3 unreclaimed

Project Partners: Stoudts Ferry Preparation Company, Schuylkill Headwaters Association, Schuylkill River Greenway Association, Reading Northern and Blue Mountain Railroad, DCNR, William Penn Foundation, Exelon, Porter Estate

This project will excavate and remove refuse material located on the Porter property that erodes into the Schuylkill River. Once all the material is removed from the site, the natural floodplain will be restored mitigating downstream flood potential in future high water events. With the restoration of the floodplain, this project will also develop a missing section of the Bartram Trail which will connect 8.5 miles of trails within the Schuylkill River Trail Network. As part of the trail, Pilot funds will be used to rehabilitate an existing bridge that crossed the Schuylkill River. An estimated 61,000 visitors will use the trail per year.



**Railroad Bridge to be restored as part of the trail developed with the Porter Floodplain Restoration Project
Photo Credit: Pennsylvania Department of Environmental Protection**

Quakake Tunnel AML Treatment and Black Creek Trail

Status: Preliminary OSMRE approval (3/2/18) - OSMRE Final Approval ATP issued (6/4/18)

Location: Carbon County

Requested AML Pilot Funding: \$3 million

Additional Funding: \$600,000 from DCED Local Share Grant, \$475,000 from the Carbon County Commissioners sub-grant from HUD, \$1 million Redevelopment Assistance Capital Program, \$300,000 from AMD Set-Aside, and \$77,000 from Growing Greener

AML Site Info: Priority 1, 2, and 3; unreclaimed and previously reclaimed

Project Partners: Weatherly Borough, Carbon County Commissioners, DCED, Wildlands Conservancy, USGS

This project will construct an Active Acid Mine Drainage (AMD) Treatment Plant for the Quakake Tunnel discharge with the intent of restoring Black Creek for recreational use. Additionally, six

miles of trail from the Lehigh Gorge State Park to Weatherly Borough will be added, as well as a new Municipal Building for Weatherly Borough. Black Creek flows into the Lehigh Gorge State Park, a popular park that has biking, fishing and rafting enthusiasts as its primary users. With the mine water treated, approximately eight miles of stream would be restored, making it fishable and generating approximately \$350,000 yearly in revenue for the local economy.

Stineman Refuse Pile

Status: Preliminary OSMRE approval (3/2/18) - OSMRE final approval ATP issued (3/21/18)

Location: Cambria County

Requested AML Pilot Funding: \$2 million

Additional Funding: \$6 million or \$14 million from traditional Title IV AML funds to address physical hazards depending on which alternative is selected

AML Site Info: Priority 1 and 2 unreclaimed

Project Partners: Cambria County, Cambria County Conservation and Recreation Authority, Stineman Ribbon Company

This project will remove 600,000 cubic yards of refuse materials from 20 acres that have trails used by the public. Two alternatives are proposed to accomplish this. Alternative 1 will pull the material away from the river and regrade, neutralize acidity, and revegetate the site. Alternative 2 will excavate and haul the neutralized refuse material to backfill dangerous highwalls at the Ehrenfeld Coal Refuse Pile Reclamation Project that was funded with FY 2016 AML Pilot funds. With either alternative, the Cambria County Conservation and Recreation Authority plans to construct a 3 mile hiking/biking trail on the cleared site that will connect the Johnstown Flood National Memorial to the Path of the Flood Trail in Ehrenfeld. When completed, an estimated 100,000 people per year will pass through the project area.

Swoyersville Refuse Pile – Community Athletic Area

Status: Preliminary OSMRE approval (3/2/18) - OSMRE Final Approval ATP issued (6/27/18)

Location: Luzerne County

Requested AML Pilot Funding: \$3.35 million

Additional Funding: \$650,000 from traditional Title IV AML funds to address physical hazards and funds from Olympus Power if project total surpasses \$4 million

AML Site Info: Priority 1, 2, and 3; unreclaimed and previously reclaimed

Project Partners: Eastern Pennsylvania Coalition for Abandoned Mine Reclamation, Olympus Power, and Pagnotti Enterprises Inc.

The project will reclaim 15 acres of abandoned mine land at the Swoyersville refuse pile site. Seven of those restored acres will be transferred to Swoyersville Borough for the development of community recreational facilities including a youth football field. The community recreational facilities will provide for recreational opportunities for all residents of Swoyersville and the surrounding area. The remaining eight acres will be available for development by the property owner. Olympus Power/Northampton Fuel have long range plans to reclaim the entire Swoyersville coal refuse pile which would ultimately restore 55 acres of AML which could all be used for industrial/commercial development within Swoyersville Borough resulting in job creation.

TASA Refuse Piles – South Sandy Creek Restoration

Status: Preliminary OSMRE approval (3/2/18) - OSMRE Final Approval ATP issued (3/12/18)

Location: Vanango County

Requested AML Pilot Funding: \$3.1 million

Additional Funding: \$20,000 from traditional Title IV AML funds to address physical hazards

AML Site Info: Priority 2 and 3 unreclaimed and previously reclaimed

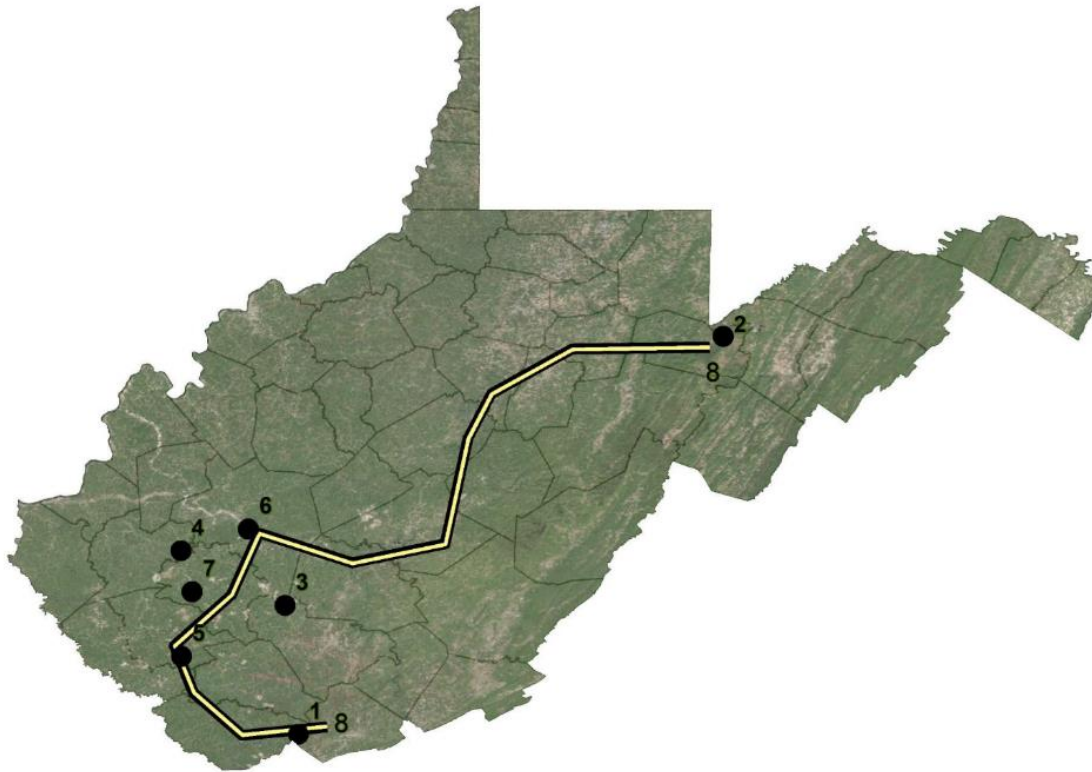
Project Partners: Scrubgrass Generating Co., South Sandy Creek Watershed Association

This project will excavate 200,000 tons of acid forming refuse and transport it to the Scrubgrass Generating Plant to be utilized to generate electricity. This material will support the 100 employees at the generating plant for 2 years. A portion of the resulting alkaline fly ash byproduct from the generation plant will be returned to the site and mixed with the existing soil to remediate the acid and reclaim the site. When completed, 52 acres of land will be restored for agricultural use and ground water quality will improve for two residential drinking wells.

FY 2017 West Virginia

West Virginia submitted a total of nine projects to use FY 2017 AML Pilot Funds that have all received preliminary approval by OSMRE and are eligible to use a portion of the available \$25 million. One of these projects have since been tabled by the state. The eight active preliminarily approved AML Pilot projects include five outdoor recreation projects, two industrial/business construction projects, and one multi-purpose project. Projects were selected for AML Pilot funding based on their potential to create long-term economic benefits in local coal communities. These projects will result in estimated outcomes that include: increased tourism by attracting over 22,000 visitors to the region; the construction of 80 miles of trails; hundreds of new jobs created; and broader impacts that will yield infrastructure development, stronger local businesses, and restoration of public lands. In addition, the pilot projects have the potential to leverage an additional \$0.50 for every \$1 of AML Pilot Program funding from public and private economic development funds. Additional information can be found through the [West Virginia Department of Environmental Protection](#).

West Virginia FY 2017 Pilot Projects



Map Index	Project Name	County
1	ATV Trail Camp at Coaldale	Mercer
2	Beaver Creek Fishery Enhancement	Tucker
3	Clear Fork Rail Trail	Raleigh
4	Ivy Branch Off Road Development Project	Boone
5	Tridelphia ATV Resort Project	Logan
6	Buzz Meats Livestock Processing and Value-Added Facility	Kanawha
7	Northern Cardinal Farms Price-Hunter Branch Hatfield AML	Boone
8	Mountain State Broadband Expressway	Multi

Map of active preliminarily approved projects receiving FY 2017 AML Pilot funds in West Virginia

Northern Cardinal Farms - Price Hunter Branch Hatfield AML

Status: Preliminary OSMRE approval (3/29/18) - OSMRE Final Approval ATP issued (10/5/18)

Location: Boone County

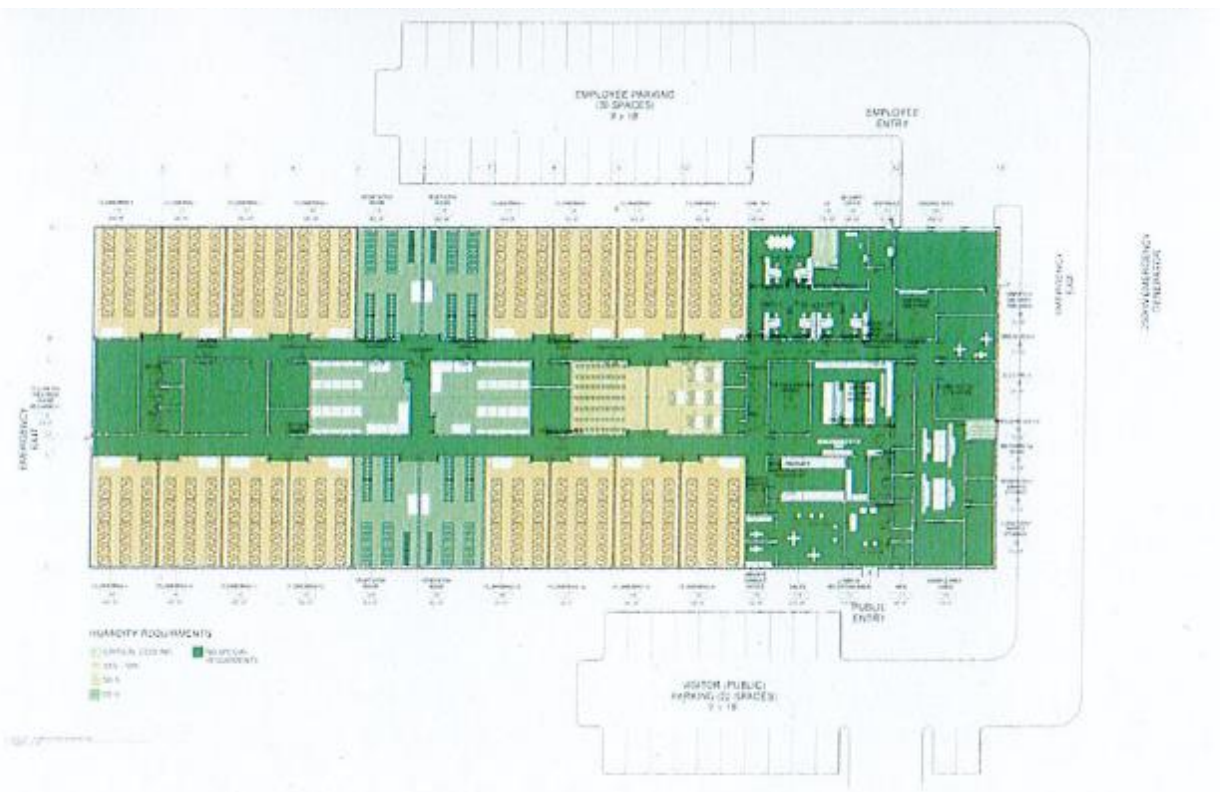
Requested AML Pilot Funding: \$3.2 million

Additional Funding: \$598,198 from other sources

AML Site Info: Priority 1, 2, and 3; unreclaimed

Project Partners: Ftera Advisors LLC

This project will run a 100,000 square foot, modern, controlled-environment agriculture greenhouse operation and produce commercial quantities of leafy greens, vegetables, and fruits. Year-round operation with seasonal variation in production will accommodate changing light and energy components within the greenhouse's operation cost structure. Local residents will be hired for approximately 15 construction jobs and at least 23 full-time employees at full capacity including displaced coal mining workers and veterans. A training curriculum will be developed for employees and may also be applied as an educational program for local middle and high schools. This project will serve as the foundation of highly-processed packaged and canned food manufacturing facilities in WV, and will provide a sustainable supply of affordable healthy vegetable and fruit produce to over 3,500 Boone County residents.



Conceptual Design for Greenhouse at Northern Cardinal Farms

ATV Trail Camp at Coaldale

Status: Preliminary OSMRE approval (2/9/18)

Location: Mercer County

Requested AML Pilot Funding: \$1.8 million

Additional Funding: \$2.3 million from other sources

AML Site Info: Priority 2 unreclaimed

Project Partners: Hatfield McCoy Regional Recreation Authority, Mercer County Commission, Region I Planning and Development Council, WV Economic Development Authority, Mercer County Health Department, WV Department of Health, WVDEP, Mercer County Conservation and Visitor Bureau, Bluewell Public Service District, BB&T, NCIF, Thrasher Engineering, Triad Engineering, Envirotech

This project will construct a trail camp for ATV riders adjacent to the site selected for the new Pocahontas Trail Welcome Center and Trailhead in Mercer County, WV. The trail camp will cater to the diverse needs of ATV enthusiasts who visit the area and include lodging facilities (20 single and double cottages), store with a restaurant, and an ATV part/service/storage/rental facility. The project will be completed in phases with the first prioritizing the construction of the lodging accommodations that will be able to host 200 guests at a time. Later phases will also add ease of access to trails, site utilities (water, electric, and cable), and security monitoring.

Beaver Creek Fishery Enhancement

Status: Preliminary OSMRE approval (3/1/18)

Location: Tucker County

Requested AML Pilot Funding: \$295,700

Additional Funding: \$15,300 in-kind

AML Site Info: Priority 3 unreclaimed

Project Partners: Canaan Valley Institute, WV Division of Natural Resources, and the WV Division of Highways

This project will restore five miles of Beaver Creek with the goal to improve recreational opportunities via visitor usability of the creek as a stocked trout fishery and the adjacent rail-trail. Enhancements include improvements to in-stream and pool habitats and planting riparian vegetation to provide long term buffer for the creek. This area is easily reached by local residents in Davis and Thomas, WV by access roads or rail-trail and will also serve as a gateway for visitors arriving in Tucker County, WV. When reclamation is completed, the creek is estimated to attract 5000 anglers annually with an annual economic impact of \$500,000.



Buffalo Coal Site along Beaver Creek
Photo Credit: West Virginia Division of Highways

Clear Fork Rail Trail

Status: Preliminary OSMRE approval (3/29/18)

Location: Raleigh County

Requested AML Pilot Funding: \$2.25 million

Additional Funding: \$100,000 from other sources

AML Site Info: Priority 2 unreclaimed

Project Partners: New River Gorge Regional Development Authority, National Coal Heritage Area Authority, ROST Whitesville Inc.

This project will reclaim a coal refuse pile and develop eight miles of abandoned rail line that served historic coal mining operations. Creation of the Clear Fork Rail Trail will generate tourism

and increase recreational opportunities for local residents. Interpretive signage along the trail will provide users with a glimpse into the history of the region and the coal communities through which the corridor passes. The trail is estimated to have 2000 users in first year and over 12,500 by the fifth year. These users are expected to generate \$2.7 million in sales over the five years. Potential business opportunities to complement the trail include: bike rental, shuttle services, lodging, and dining.

Ivy Branch Off-Road Development (Phase 1)

Status: Preliminary OSMRE approval (3/29/18)

Location: Lincoln and Boone Counties

Requested AML Pilot Funding: \$3.32 million

AML Site Info: Priority 2 unreclaimed

Project Partners: Boone County Community and Economic Development Corporation, Lincoln County Economic Development Authority

This project would purchase the former Ivy Branch Trail System to ensure the 2,600 acres stays available to the public for recreational and economic developmental purposes. Once public safety is addressed with the reclamation of the AML sites, over 40 miles of new trails will be opened. These trails will be open for ATV use and also be able to accommodate full size vehicles such as jeeps. Within the first five years after project completion, it is estimated that ten new businesses will be developed on the property, as well as 100 new cabins, and space for outdoor activities such as camping and kayaking.

Livestock, Processing, and Value-Added Facility

Status: Preliminary OSMRE approval (3/29/18)

Location: Kanawha County

Requested AML Pilot Funding: \$4 million

Additional Funding: \$1 million from other sources

AML Site Info: Priority 1 and Priority 2 unreclaimed and previously reclaimed

Project Partners: Refresh Appalachia, WV Department of Agriculture, WV Small Business Development Center

This project will construct a modern, food-safe facility on abandoned mine land for converting local livestock to marketable meat. Construction is expected to create 10 – 15 temporary jobs and the completed facility, is estimated to directly create 30 – 37 jobs within 4 years, including at least 12 entry-level positions. On-the-job training programs catered to former coal miners and veterans will be held at the site and are eligible as college credit. The facility will be owned by an established company with 500 clients that include restaurants, hotels, resorts, and country clubs in WV and the surrounding states. Additionally, indirect jobs created would include relating to marketing, distribution, and sales.

Mountain State Broadband Expressway – Phase 2

Status: Preliminary OSMRE approval (10/15/2017)

Location: Field recon in progress to determine sites of broadband towers across various counties

Requested AML Pilot Funding: \$3.35 million

Additional Funding: \$18 million from other sources⁴

⁴ This funding was also reported with the first stage of this project that was funding with FY 2016 AML Pilot funds

AML Site Info: To be determined based on where tower locations are needed

Project Partners: Region VII Planning Council, Shentel Comm., Micrologic Inc., Microsoft. Inc.

Update: Multi-phase project that is also using funds from the FY 2016 Pilot Program

This project is a continuation of the project that used FY 2016 AML Pilot funding toward building an open-access fiber/wireless hybrid network of fiber linked high capacity telecommunication towers creating a foundational backbone running north and south through eastern WV. Planned towers will be dispersed along the path on AML sites and provide affordable broadband service to rural areas which mostly lack access to the internet. When completed, this project will impact 28 counties in WV including Barbour, Boone, Braxton, Clay, Fayette, Gilmer, Grant, Greenbrier, Kanawha, Lincoln, Logan, McDowell, Mercer, Mineral, Mingo, Nicholas, Pocahontas, Preston, Raleigh, Randolph, Roane, Summers, Taylor, Tucker, Upshur, Wayne, Webster, and Wyoming.

Tridelphia ATV Resort Project

Status: Preliminary OSMRE approval (2/9/18)

Location: Logan County

Requested AML Pilot Funding: \$1.57 million

Additional Funding: \$6 million from the WW McDonald Land Company

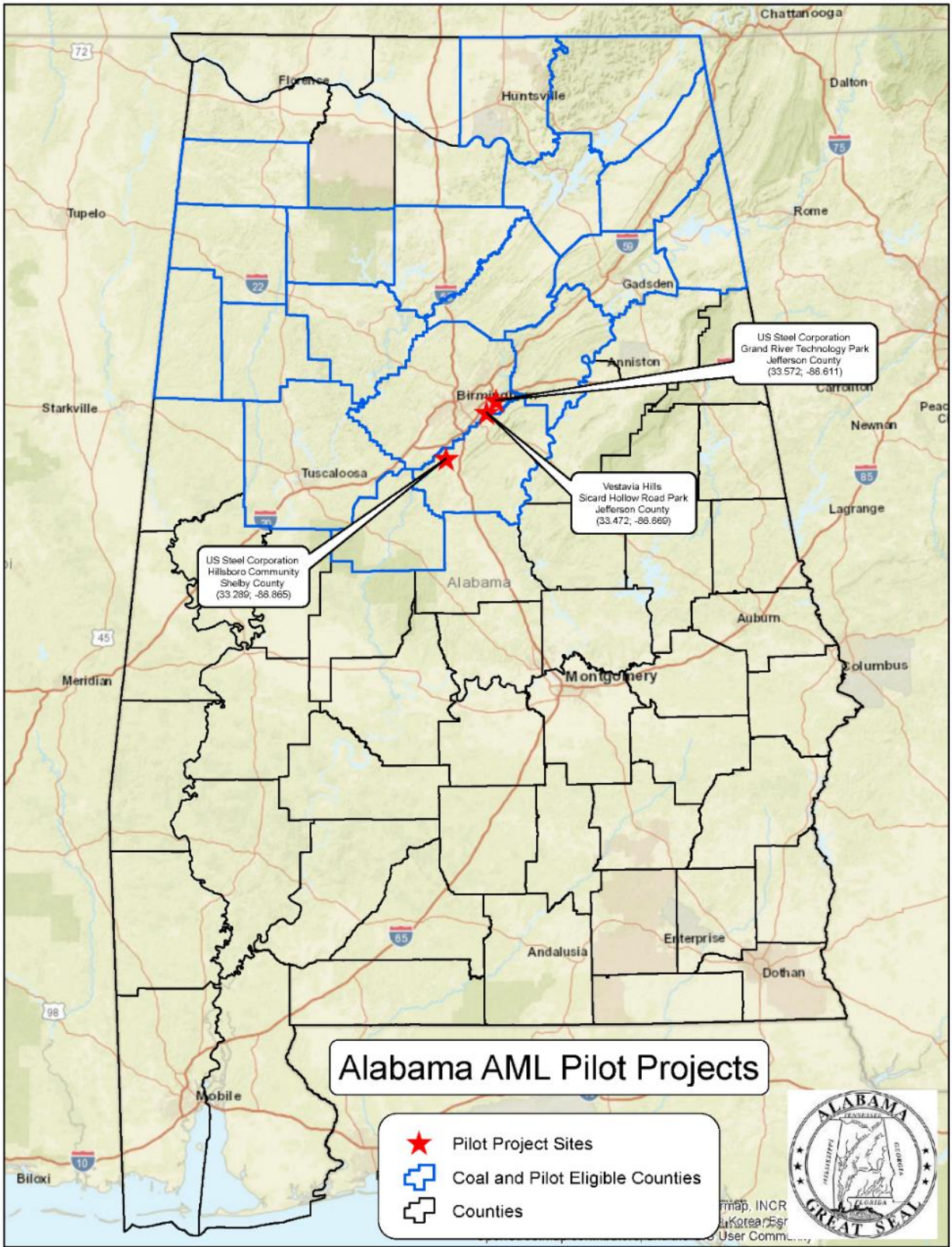
AML Site Info: Priority 2 unreclaimed

Project Partners: WW McDonald Land Company

This project will support development of a resort along the Hatfield McCoy Trail System in Logan County, WV. Pilot funds would be used to reclaim AML features, construct new ATV trails adjacent to the resort, and move WV State Route 80 over 12 feet to accommodate an existing railroad crossing which must be utilized for the resort access road. With AML Pilot funding, the WW McDonald Land Company (developer) is ready to invest \$6 million for two phases of construction that includes: 33 cottages, 15 full hookup RV sites, and a general store. A phase 3 would be added at a later date and construct a 40-room lodge that is estimated to see 3,000 annual overnight guests. The developer would also release over 15,000 acres of property adjacent to the resort for over 40 miles of ATV trails to be developed by the Hatfield McCoy Regional Recreation Authority.

FY 2017 Alabama

Alabama submitted a total of three projects to use FY 2017 AML Pilot Funds that have all received preliminary approval by OSMRE and are eligible to use a portion of the available \$10 million. Located within two counties in northern Alabama, the three preliminarily approved AML Pilot projects include one outdoor recreation project and two multi-purpose projects. Projects were selected for AML Pilot funding based on their potential to create long-term economic benefits in local coal communities. These projects will result in estimated outcomes that include: increased tourism by attracting over 60,000 additional visitors to the region; the construction of community amenities and over 4.5 miles of roads and trails; new jobs created in two future industrial and commercial districts; and broader impacts that will yield infrastructure development, stronger local businesses, and restoration of public lands. In addition, the pilot projects have the potential to leverage an additional \$5 for every \$1 of AML Pilot Program funding from public and private economic development funds. Additional information can be found through the [Alabama Department of Labor](#).



Map of preliminarily approved projects receiving FY 2017 AML Pilot funds in Alabama

Grand River Technology Park

Status: Preliminary OSMRE approval (3/15/18)

Location: Jefferson County

Requested AML Pilot Funding: \$6 million

Additional Funding: \$41.2 million from other sources

AML Site Info: Priority 2 and Priority 3 previously reclaimed

Project Partners: U.S. Steel Corporation, City of Birmingham, Southern Museum of Flight, Jefferson County, City of Leeds

This is a multi-phase project to transform approximately 105 acres of undeveloped land adjacent to AML sites into a regional nexus for research and development, tourism, and light manufacturing. AML Pilot funds will be used to prep the site for construction and add road and sewer infrastructure. The first phase will involve the construction of a new building for the Southern Museum of Flight which estimates an increase in annual visitation from 60,000 to 120,000 with the new facility. Later phases will involve development of an Industrial Research and Light Manufacturing that will support regional automotive, medical, and industrial industries. The final phase involves construction of a residential development and elementary school to support the demand for housing with the jobs created in the Technology Park.



Location of the Grand River Technology Park project area relative to local area

Hillsboro Community

Status: Preliminary OSMRE approval (3/15/18)

Location: Shelby County

Requested AML Pilot Funding: \$3.25 million

Additional Funding: \$9 million from other sources

AML Site Info: Priority 1 and Priority 2 previously reclaimed

Project Partners: U.S. Steel Corporation, City of Helena, U.S. Army Corps of Engineers, Alabama Department of Environmental Management

This is a multi-phase project to develop 3,600 acres for mixed use. The project will occur in four separate phases that will be connected by an integrated trail system linking the project to downtown Helena. Phase 1: Town Center Residential - Installation of sewer and utilities, plus grading and road construction of approximately 3,080 linear feet of roadway, to create 53 new residential lots. Phase 2: Town Center Commercial - Grading, utilities, parking and paving of approximately 14 acres to facilitate the construction of a commercial district with over 46,000 sq. ft. of new retail, 23,000 feet of office space, and up to 23,000 sq. ft. of second-level residential space. Phase 3: Hillsboro Lake and Trail System - Construction of a 21-acre lake encircled with 2 miles of walking trail, a 60-acre park and common area, and connection to the existing trail system. Phase 4: Coke Oven Park - Construction of one mile of trail alongside a landscaped park and a bridge along the abandoned Eureka Railroad bed.

Sicard Hollow Park

Status: Preliminary OSMRE approval (3/15/18) - OSMRE Final Approval ATP issued (9/26/18) and reissued (11/27/18)

Location: Jefferson County

Requested AML Pilot Funding: \$750,000

Additional Funding: \$1.2 million from traditional Title IV AML funds to address physical hazards and \$1.3 million from other sources

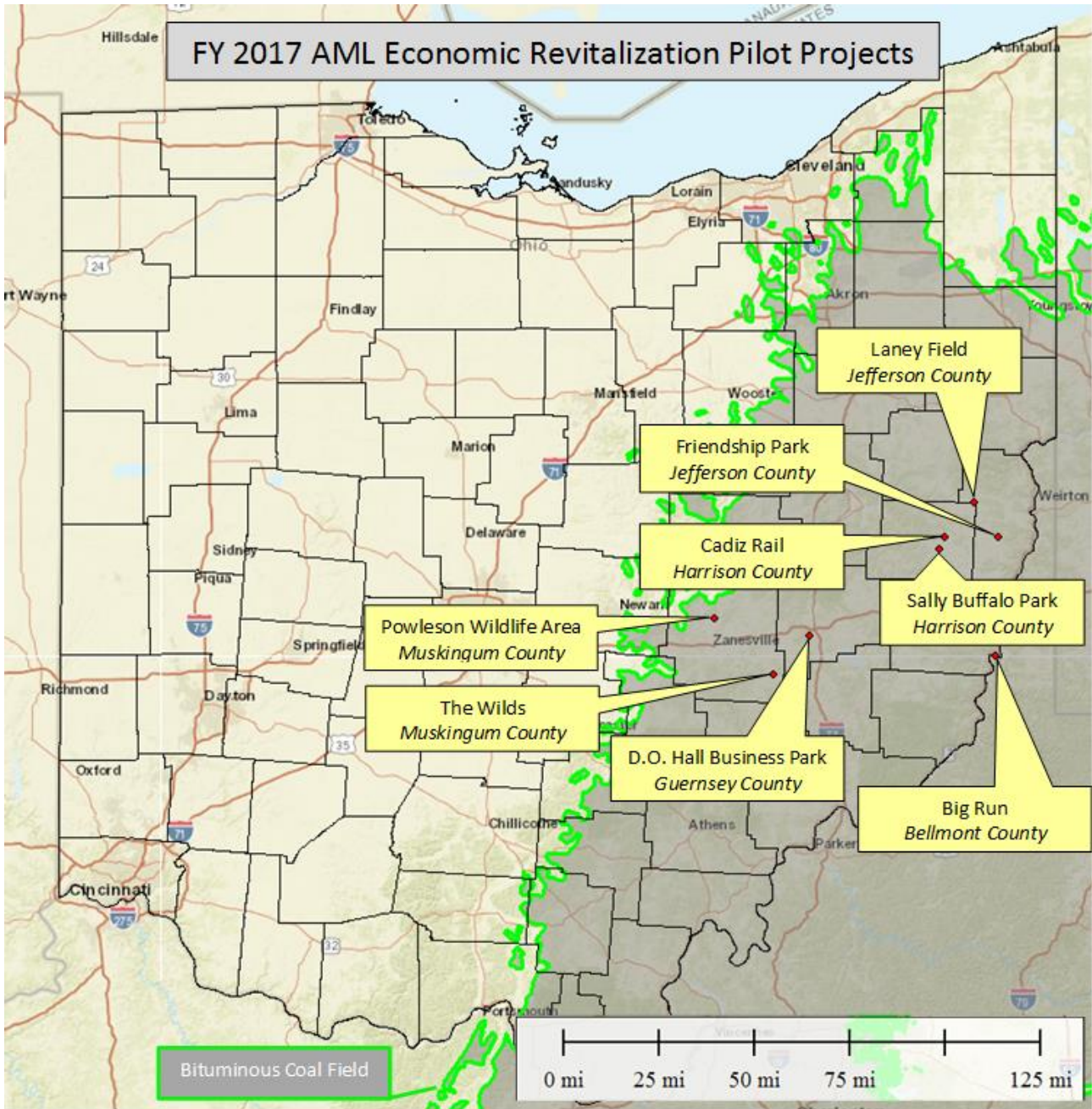
AML Site Info: Priority 1, 2, and 3 previously reclaimed

Project Partners: City of Vestavia Hills

This project will improve and expand the Sicard Hollow Athletic Complex and Park that was established as a recreational space by the City of Vestavia Hills on a reclaimed AML site. Currently the site features soccer facilities, trails, a playground, a splash pad, and a pavilion. AML Pilot funds will be used to continue improvements to the park and include: addition of a turn lane into the park; parking improvements with 100 additional spots; addition of an 300 seat amphitheater and covered stage; installation of an additional 50 person pavilion; public wi-fi access; and the addition of a multi-purpose athletic court. When completed, visitation is expected to increase from the current 156,000 visitors per year.

FY 2017 Ohio

Ohio submitted a total of eight projects to use FY 2017 AML Pilot Funds that have all received preliminary approval by OSMRE and are eligible to use a portion of the available \$10 million. Located across five counties in eastern Ohio, the eight preliminarily approved AML Pilot projects include five outdoor recreation projects, two industrial construction projects, and one infrastructure improvement project. Projects were selected for AML Pilot funding based on their potential to create long-term economic benefits in local coal communities. These projects will result in estimated outcomes that include: hundreds of jobs created through industrial and commercial development, future development opportunities through sustaining rail infrastructure, and revenue generated from new visitors to outdoor recreation activities such as camping, youth sports, and hunting. In addition, the pilot projects have the potential to leverage an additional \$1.7 for every \$1 of AML Pilot Program funding from public and private economic development funds. Additional information on the Ohio AML program can be found through the [Ohio Department of Natural Resources - Division of Mineral Resources](#).



Map of preliminarily approved projects receiving FY 2017 AML Pilot funds in Ohio

Big Run Gob Pile

Status: Preliminary OSMRE approval (3/1/18)

Location: Belmont County

Requested AML Pilot Funding: \$3.9 million

Additional Funding: \$1.45 million from FirstEnergy and \$14 million from by Jobs Ohio

AML Site Info: Priority 1 and Priority 3 unreclaimed

Project Partners: JobsOhio and PTT Global Chemical America (PTTGCA)

This project will reclaim 25 acres of mine waste material in preparation for the construction of a global scale petro-chemical plant. Reclamation will aid in the development of a 400-500 acre facility necessary to build a \$6 billion dollar ethane cracker plant. The plant would use locally sourced raw petroleum liquids and would create hundreds of well-paying jobs. In addition, thousands of jobs are expected to be created for the construction and support of the plant.



Future building site of the ethane cracker plant at the Big Run Gob Pile Project Site

Cadiz Rail Highwall

Status: Preliminary OSMRE approval (3/1/18) - OSMRE Final Approval ATP issued (3/29/18)

Location: Harrison County

Requested AML Pilot Funding: \$627,924

AML Site Info: Priority 1, 2, and 3; unreclaimed and previously reclaimed

Project Partners: OMEGA and ODNR DMRM AML

This project will reclaim a dangerous high wall in order to improve the reliability and safety of the adjacent active railroad line and county road. Slips, sloughing, and erosion are evident along the

highwall which have posed threats to the railroad and roadway. The railway currently provides up to 60 cars a day of stabilized condensate and coal to the Midwest Utica Terminal which maintains employment for 30 – 35 employees. This improvement will also provide potential future development for increased use with the addition of another rail line to a proposed landfill.

D.O. Hall Business Center Mine Stabilization

Status: Preliminary OSMRE approval (5/24/18)

Location: Guernsey County

Requested AML Pilot Funding: \$1.4 million

Additional Funding: \$150,000 from Cambridge/Guernsey County Community Development Corporation (CIC)

AML Site Info: Priority 1 and Priority 2 unreclaimed and previously reclaimed

Project Partners: Rural Action, and the Cambridge/Guernsey County Community Development Corporation (CIC).

The project will stabilize four acres currently situated over underground mines within the D.O. Hall Business Center. Once stable, this will allow further development into a nine acre parcel within the area. Five businesses that employ a total of 370 individuals currently occupy 107 acres of the Business Center and numerous businesses have expressed interested to develop some of the remaining space. Based on current use, the 9 acres made available by this project are expected to attract a new business with approximately 70 employees.

Friendship Park Highwall

Status: Preliminary OSMRE approval (3/1/18)

Location: Jefferson County

Requested AML Pilot Funding: \$1.2 million

Additional Funding: \$8,269 from other sources

AML Site Info: Priority 1 and Priority 2 unreclaimed and previously reclaimed

Project Partners: Friendship Park District, Jefferson County Commissioners, Ohio Mid-Eastern Governments Association, and the Ohio Public Works Commission (Clean Ohio Conservation)

This project will reclaim over 27 acres within Friendship Park in order to increase usable acres for visitors. The reclaimed acres will be used to establish native grassland which are a rarity in eastern Ohio. This attraction of new habitat is expected to result in an increase to park attendance as well as being well suited for academic research. Visitors will also experience improved safety within the park once the AML hazards have been removed. Activities in the park include: camping, boating, fishing, picnicking, and hunting.

Laney Field Highwall

Status: Preliminary OSMRE approval (3/1/18)

Location: Jefferson County

Requested AML Pilot Funding: \$103,000

Additional Funding: \$35,000 from other sources

AML Site Info: Priority 1, 2, and 3; unreclaimed and previously reclaimed

Project Partners: East Springfield Baseball Association

This project will regrade several AML sites to allow the creation of a multi-use sports field that is adjacent to the current local baseball field. The new field would be used for a number of sports

including soccer, baseball, and various other sports and recreational opportunities. The additional field space would reduce conflicts at the existing field and increase the number of practices/games that can occur at the same time. It is anticipated that 20 to 40 T-ball games and 50-100 soccer games will use the field per year. Benefits of this project include the expansion of local youth sport options, additional opportunity for local businesses to sponsor teams, generation of concessions stand sales, and attracting visitors to East Springfield.

Powelson Wildlife Area Highwalls

Status: Preliminary OSMRE approval (3/1/18) - OSMRE Final Approval ATP issued (5/21/18)

Location: Muskingum County

Requested AML Pilot Funding: \$4 million

AML Site Info: Priority 1 and Priority 2 unreclaimed and previously reclaimed

Project Partners: ODNR DOW

This project will reclaim over 13,000 ft. of dangerous high walls for the purpose of increasing visitation through improvements in hunting opportunity. This will be accomplished through the conversion of up to 137 acres to diverse habitats that are not currently found within the Powelson Wildlife Area. These habitats will be able to better manage game species including wild turkey, dove, and wood duck. Removal of the highwalls will also increase safe access to the area for local hunting groups, educational programs, and specialty hunts for handicapped individuals.

Sally Buffalo Park Phase 2

Status: Preliminary OSMRE approval (3/1/18) - OSMRE Final Approval ATP issued (3/12/18)

Location: Harrison County

Requested AML Pilot Funding: \$707,363.90

Additional Funding: \$1,500 from the Sally Buffalo Park Development for phase 1, \$250,000 from Sally Buffalo Park Development for phase 2

AML Site Info: Priority 1 and Priority 2 unreclaimed

Project Partners: OMEGA, Village of Cadiz, Sally Buffalo Park Board, ODNR DMRM AML, Office of Surface Mining,

This project will reclaim a dangerous high wall to provide a scenic view and add 46 additional campsites to the Sally Buffalo Park which is owned and operated by the city of Cadiz. Currently the park has 245 camp sites and 30 amp electrical service for RVs. The new camp sites will be used for primitive camping until new electrical service is run to the area providing 50 amp RV electric hookups. The additional camp sites and improved electrical service is expected to increase visitation and generate an additional \$100,000 in annual revenue.

The Wilds Campground Recreation Project

Status: Preliminary OSMRE approval (4/26/18)

Location: Muskingum County

Requested AML Pilot Funding: \$1 million

Additional Funding: \$965,000 is being sought through other grant opportunities and a private donor

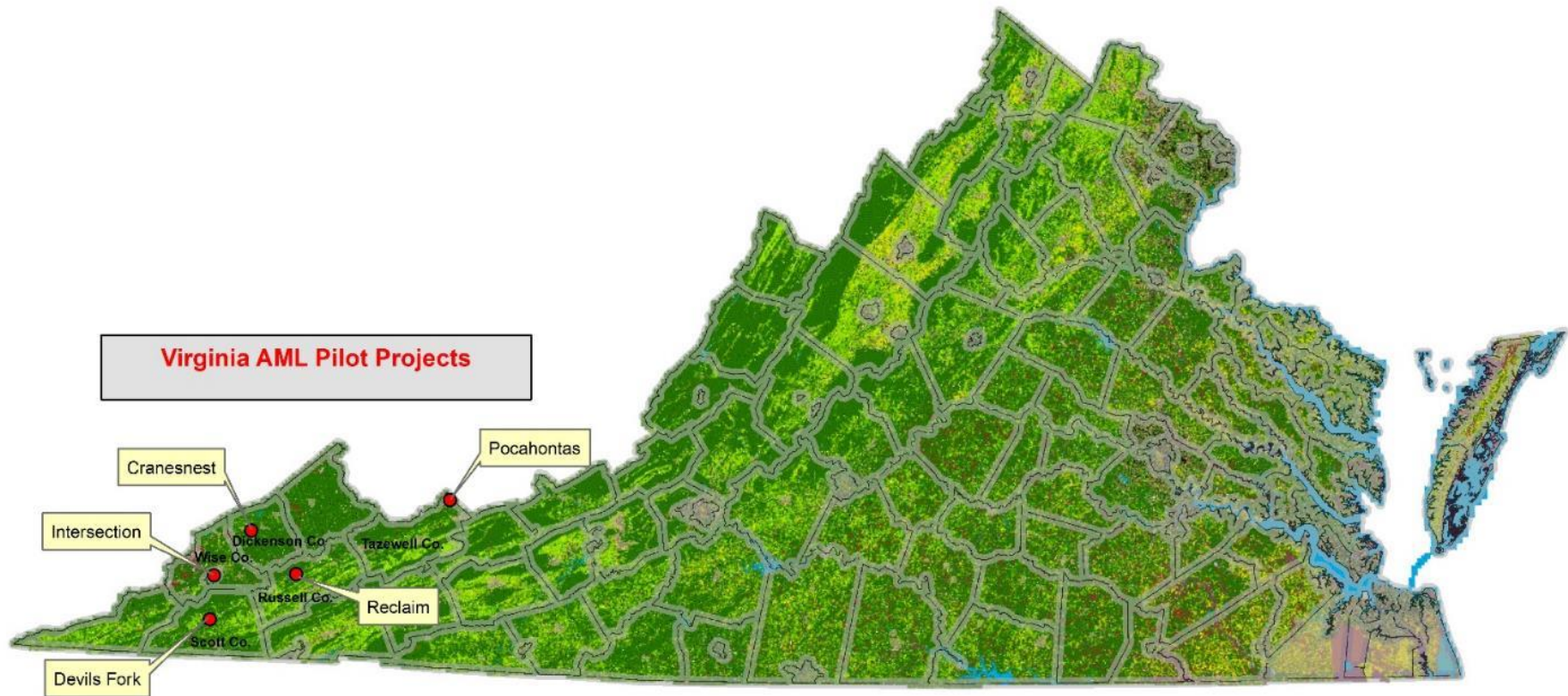
AML Site Info: Priority 1 and Priority 3 unreclaimed

Project Partners: The Wilds

The project will develop 25 acres to include a primary access road to a proposed RV campground, 20 – 30 RV parking pads, roads within the camping area, 30 primitive camp sites with a parking area, and a foot bridge to the campground trailhead. Later phases of this project will install electric and water utilities, road surfaces to the campground, and two cabins. One cabin will serve as housing for the camp host and the other will be available to rent. Upon completion, hiking and biking trails will be connected to access 650 acres of a previously unused area and permitting additional outdoor activities including: fishing, kayaking, wildlife viewing, and photography.

FY 2017 Virginia

Virginia submitted a total of five projects to use FY 2017 AML Pilot Funds that have all received preliminary approval by OSMRE and are eligible to use a portion of the available \$10 million. Located across five counties in southwestern Virginia, the five preliminarily approved AML Pilot projects include two outdoor recreation projects, two industrial construction projects, and one visitor attraction project. Projects were selected for AML Pilot funding based on their potential to create long-term economic benefits in local coal communities. These projects will result in estimated outcomes that include: 267 acres of industrial ready building sites; increased tourism to local attractions; construction and improvement of 8.3 miles of trails; and broader impacts that will yield infrastructure development, stronger local businesses, and restoration of public lands. In addition, the pilot projects have the potential to leverage an additional \$0.50 for every \$1 of AML Pilot Program funding from public and private economic development funds. Additional information can be found through the [Virginia Division of Mined Land Reclamation](#).



Map of preliminarily approved projects receiving FY 2017 AML Pilot funds in Virginia

Project Reclaim

Status: Preliminary OSMRE approval (5/30/18) - OSMRE Final Approval ATP issued (11/6/18)

Location: Russell County

Requested AML Pilot Funding: \$3.2 million

Additional Funding: Land donated by The Russell County Reclamation, LLC with a value of \$1,105,500

AML Site Info: Priority 1, 2, 3, and 5; unreclaimed and previously reclaimed

Project Partners: Russell County Reclamation, LLC and Russell County Industrial Development Authority

This project will backfill and grade a 32 acre gob pile and repurpose adjacent lands to create a 67 acre regional industrial site. Removal of gob material will be completed as a no-cost AML enhancement reclamation. Proximity to infrastructure that will remain, be repurposed, and otherwise available to support the new industrial site will include: 25,000 linear feet of existing rail siding; access to a 69 kV electric distribution line and 3 Phase power; electric substations; over 1.75 miles of gravel road; 4 access points with 2 bridges over Dumps Creek; redundant sources of water supply; and natural gas. Three industrial projects have expressed interest in the site once reclamation is completed.



Gob Pile at Project Reclaim site

Photo Credit: Virginia Division of Mined Land Reclamation

Cranesnest Trail and Portal Closure Project

Status: Preliminary OSMRE approval (3/29/18)

Location: Dickenson County

Requested AML Pilot Funding: \$711,100

AML Site Info: Priority 1 and Priority 3 unreclaimed and previously reclaimed

Project Partners: Dickenson County

The project will consist of closure of nine old mine portals and converting 3,000 feet of the access road to a multiuse recreation trail. Additionally, 1,500 feet of new trail and a bridge across Holly

Creek will be constructed so that a connection can be made to the existing Cranesnest Trail. The connection will allow the Cranesnest Trail to be connected to the road system serving the Cranesnest Campground and the Boat Ramp on Flannagan Reservoir and position the trail for further expansion on Flannagan Reservoir.

Pocahontas Exhibition Mine and Museum

Status: Preliminary OSMRE approval (3/29/18)

Location: Tazewell County

Requested AML Pilot Funding: \$1.5 million

Additional Funding: \$1.9 million from other sources

AML Site Info: Priority 1, 2, and 3; unreclaimed and previously reclaimed

Project Partners: Town of Pocahontas, Tazewell County Board of Supervisors, Tazewell County Tourism, Cumberland Plateau Planning District Commission, and Thompson & Litton, Inc.

This project will refurbish the Pocahontas Exhibition Mine and Museum which lies near the Spearhead and Hatfield-McCoy off-road trail system. With the renovation, new visitors will be attracted to the Exhibition Mine and Museum from the nearby trails. It is expected to result in a 50% increase in ticket sales in the first year, generating an estimated \$84,100 in revenue for the fiscal year 2019. A second phase of this project will include additional mine improvements, addition of a tram stop including an on-site eatery, and reclamation of abandoned mine land adjacent to the site for use in commercial business.

Project Intersection

Status: Preliminary OSMRE approval (3/29/18)

Location: City of Norton

Requested AML Pilot Funding: \$3.5 million

Additional Funding: \$1.25 million from other sources

AML Site Info: Priority 1, 2, and 3; unreclaimed and previously reclaimed

Project Partners: Industrial Development Authority of the City of Norton, Regional Industrial Facilities Authority, and the Virginia Tobacco Commission

This project will reclaim an unstable highwall and other AML features to create up to 200 acres of desirable and highly visible industrial property. Three building pads will be prepared on site including one that already has a letter of interest to construct a 175,000 square foot shell building that is estimated to create 63 jobs in three to four years. Future phases include site development for two additional industrial buildings (100,000 and 45,000 square feet) in addition to 1 mile of access roads and additional infrastructure (4,000 linear feet for water and sewer lines, and the deployment of broadband, natural gas, electric service).

Upper Tennessee River Roundtable – Devil’s Fork Project

Status: Preliminary OSMRE approval (3/29/18)

Location: Scott County

Requested AML Pilot Funding: \$88,302

Additional Funding: \$172,350 from other sources

AML Site Info: Priority 2 and Priority 3 unreclaimed

Project Partners: U.S. Forest Service, Friends of SW Virginia, Scott County, and Appalachian Voices

This project will enhance the Devil's Fork Loop Trail through development of a new parking lot, trail improvements, and mitigation of two adjacent mine portals. The 7.3 mile trail is the primary access to the famous Devil's Bathtub and Three Forks waterfall and currently is not equipped to handle peak visitation of 800 - 1000 visitors per weekend.

V. Implementation of the FY 2018 AML Pilot Program

OSMRE released the *FY 2018 AML Pilot Guidance Document* to stakeholders on September 14, 2018. This guidance document was developed by OSMRE to assist the states in their selections of projects and reflected several improvements from the previous year. The guidance document outlined general criteria by which potential projects should be evaluated for eligibility and successful selection, as well as suggested means by which projects could meet the economic and community development nexus criteria. Updates to the [guidance document](#) for FY 2018 included reporting requirements and instruction for the purchase of real property.

OSMRE facilitated a meeting on October 30, 2018, in Colorado with tribal AML Program staff from the Crow Tribe, Hopi Tribe, and the Navajo Nation to introduce and provide guidance on the AML Pilot Program. A follow-up meeting was held on December 18, 2018, with state and tribal AML Program staff from Kentucky, Pennsylvania, West Virginia, Alabama, Ohio, Virginia, Crow Tribe, Hopi Tribe, and the Navajo Nation to address questions and discuss changes and clarifications from the previous year. OSMRE awarded FY 2018 AML Pilot grants to West Virginia and Pennsylvania (\$25 million each) in October and November 2018 respectively. OSMRE expects FY 2018 AML Pilot grant applications from the remaining eligible states and tribes in the coming months.

FY 2018

OSMRE notified eligible states and tribes on May 22, 2018, that their AML Pilot funding was available and they could prepare grant applications. As of November 30, 2018, OSMRE had approved and awarded FY 2018 Pilot funds to West Virginia and Pennsylvania. Funds will be awarded to the remaining eligible states and tribes once their FY 2018 AML Pilot grant applications have been received and approved. OSMRE anticipates that FY 2018 AML Pilot grant applications for the remaining eligible states and tribes will be submitted in the coming months. Applications for Pilot projects that will utilize FY 2018 AML Pilot funds are being compiled by states and tribes and are expected to be submitted to OSMRE in 2019. Details for these projects will be reviewed for preliminary approval and included in the next AML Pilot Report.

VI. Summary

With the continuation of the AML Pilot Program through FY 2018, OSMRE has seen sustained interest from public and private stakeholders and funders to align and expand the scope of economic and community development projects in conjunction with AML Pilot investment. Each state/tribal AML program has been encouraged to collaborate with its respective state and local economic development authorities and local communities to identify and fund projects with the greatest potential for economic development. OSMRE has also encouraged states to work with local organizations engaged in comprehensive strategic community or regional development.