

Rosebud Mine Area F

Federal Mining Plan Modification for Federal Coal Lease MTM 082186



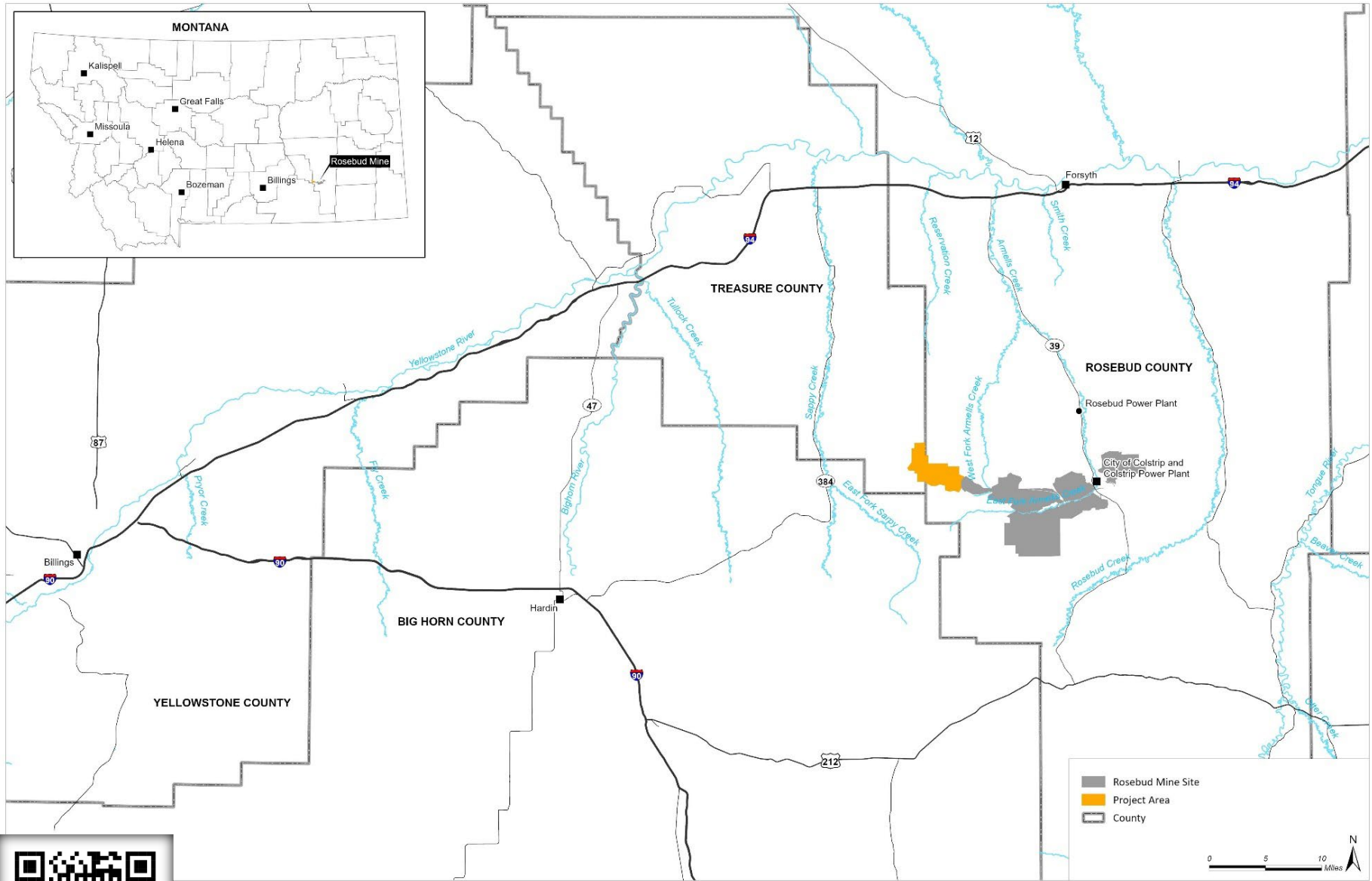
Draft Supplemental Environmental Impact Statement

Project Overview

Area F of the Rosebud Mine is located about 12 miles outside of Colstrip, Montana, on private and public land in Rosebud and Treasure Counties. The 6,773-acre Area F is one of several active permit areas of the Rosebud Mine (40,127 acres), a surface coal mine that is operated by Westmoreland Rosebud, LLC. Coal mining in Area F began in 2020 pursuant to an approved Federal mining plan, which authorized coal removal in Federal Coal Lease MTM 082186, and state operating permit C2011003F. Coal from Area F is sent by conveyor to the Colstrip Steam Electric Station (Colstrip Power Plant) for combustion in Units 3 and 4. High-sulfur “waste coal” from Area F is sent by truck to the Rosebud Power Plant for combustion.

The U.S. Department of the Interior, Office of Surface Mining Reclamation and Enforcement (OSMRE) has published a Notice of Availability for the *Rosebud Mine Area F Supplemental Environmental Impact Statement (SEIS)*, initiating a 45-day public comment period (through January 20, 2025). OSMRE prepared the SEIS to address a 2022 order issued by the United States District Court for the District of Montana (*Montana Env't Info. Ctr. v. Haaland*, No. CV 19-130-BLG-SPW, 2022 U.S. Dist. LEXIS 179417). The District Court identified deficiencies in the *2018 Western Energy Area F Final Environmental Impact Statement*, and the SEIS remedies the following: (1) inadequate surface water cumulative impacts analysis, (2) inadequate greenhouse gas emissions analysis, (3) inadequate analysis of indirect effects of mine expansion on water withdrawals from the Yellowstone River, and (4) failure to analyze a reasonable range of alternatives. The SEIS also updates and supplements analyses related to potential impacts on other resources as determined necessary by OSMRE, pursuant to the National Environmental Policy Act (NEPA). Three alternatives are analyzed in the SEIS (blue rows in the table below).

Alternative	Area F Permit Area	Area F total disturbance area	Coal recovery	Last year of mining
Alternative 1 – No Action (updated in the SEIS)	6,773 acres	1,021 acres	17.1 million tons	2025
<i>Alternative 2 – 2018 Final EIS Proposed Action</i>	6,746 acres	4,260 acres	70.8 million tons	2039
<i>Alternative 3 – Proposed Action Plus Environmental Protection Measures</i>	6,746 acres	4,260 acres	70.8 million tons	2039
Alternative 4 – Proposed Action (Current Federal Mining Plan)	6,773 acres	4,288 acres	71.3 million tons	2039
Alternative 5 – Partial Mining Alternative	6,773 acres	2,495 acres	37.1 million tons	2030



Please scan QR code to access OSMRE NEPA Projects