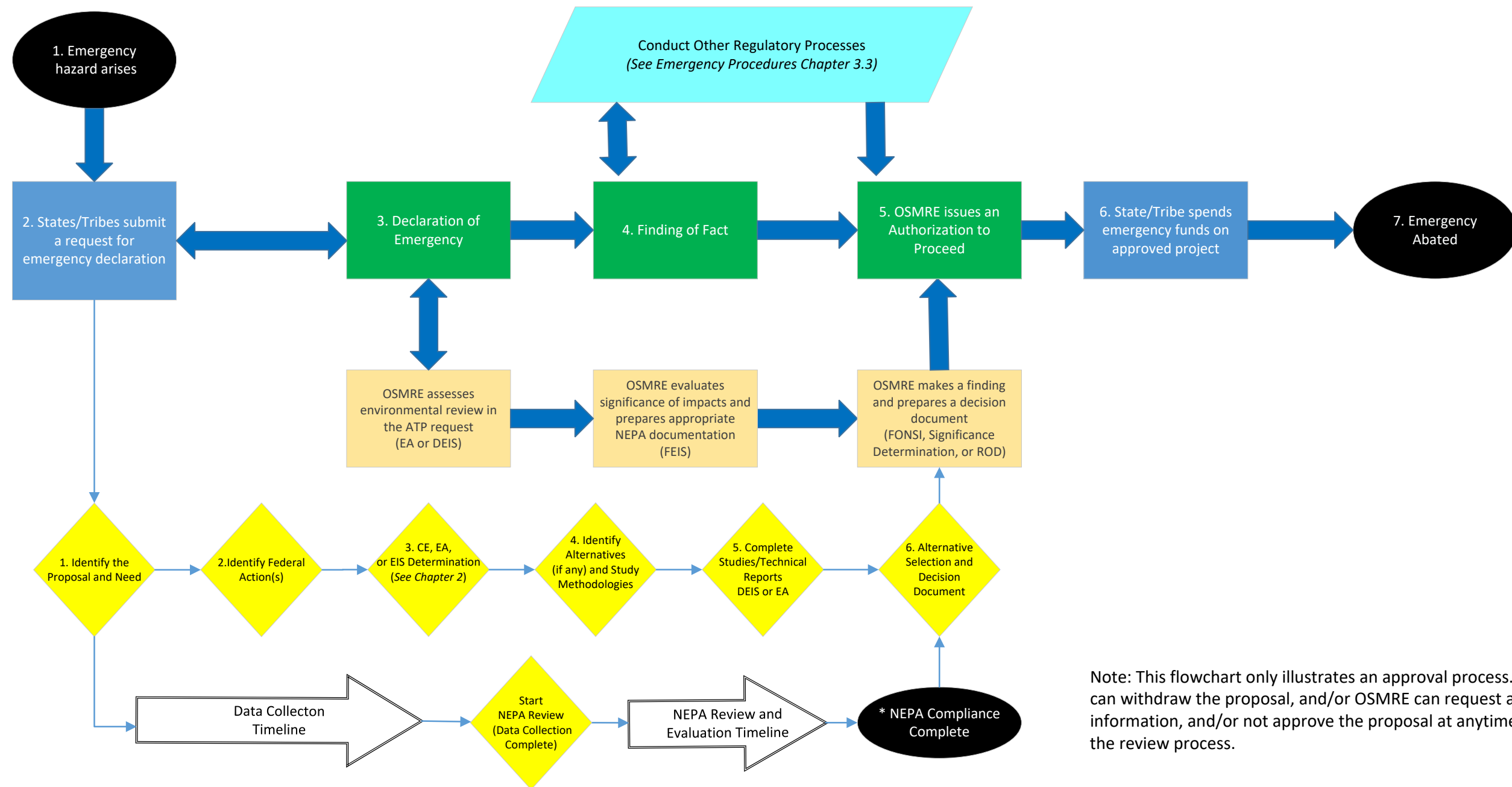


APPENDIX 4.2-6 Emergency AML Reclamation Process

Note depending on the emergency and danger, the NEPA evaluation can be deferred in order to provide immediate assistance as needed. (See Chapter 2 for more information)

Legend

- Beginning or End Point
- ↔ Task Direction Arrows
- ➡ Iterative Task Direction Arrows
- Required Project Tasks
 - State or Tribal Program Responsibility
 - OSMRE Program Responsibility
 - OSMRE NEPA Review Tasks
 - OSMRE Tasks for Other Regulatory Processes (See Chapter 4.4.3)
- Timing Guide in relation to Tasks (See Chapter 4.4.4)
 - ◆ Milestone and Decisions Points
 - ➡ NEPA Schedule Guide
 - ➡ Guidelines for Milestones and Decisions Point Timing (Note: Approximately located as a sliding scale based on specific project circumstances)



Note: This flowchart only illustrates an approval process. An applicant can withdraw the proposal, and/or OSMRE can request additional information, and/or not approve the proposal at anytime throughout the review process.