

UNITED STATES
DEPARTMENT OF THE INTERIOR

This mining plan approval document is issued by the United States of America to:

Black Butte Coal Company
P.O. Box 98
Point of Rocks, WY 82942-0098

for a mining plan modification for Federal lease WYW 6266 at the Black Butte Mine. This mining plan modification approval supplements all previous mining plan approvals for the Black Butte Mine. The approval is subject to the following conditions. Black Butte Coal Company is hereinafter referred to as the operator.

1. Statutes and Regulations: This mining plan approval is issued pursuant to Federal Coal lease WYW 6266; the Mineral Leasing Act of 1920, as amended (30 U.S.C. §§ 181 *et seq.*); and in the case of acquired lands, the Mineral Leasing Act for Acquired Lands of 1947, as amended (30 U.S.C. §§ 351 *et seq.*). This mining plan approval is subject to all applicable laws and regulations of the Secretary of the Interior which are now or hereafter in force; and all such laws and regulations are made part hereof. The operator must comply with the provisions of the Federal Water Pollution and Control Act (33 U.S.C. §§ 1251 *et seq.*), the Clean Air Act (42 U.S.C. §§ 7401 *et seq.*), and other applicable Federal laws.
2. This document approves the mining plan modification for Federal Coal Lease WYW 6266 at the Black Butte Mine and authorizes coal development or mining operations on the Federal lease within the area of mining plan modification approval. This authorization expands the approved mining plan area into the following Federal coal lands:

Township 19 North, Range 100 W. 6th P.M., WY

- Section 12 SW¹/₄NE¹/₄, S¹/₂NW¹/₄, SW¹/₄, W¹/₂SE¹/₄, and SE¹/₄SE¹/₄ (Pit 15)
- Section 24 NW¹/₄NW¹/₄NE¹/₄, E¹/₂NE¹/₄NW¹/₄, and N¹/₂SE¹/₄NW¹/₄ (Pit 10)

These lands in Federal lease WYW 6266 encompass approximately 450 acres and are shown on the map appended hereto referred as Attachment A.

3. The operator is allowed to conduct coal development or mining operations only as described in the complete permit application package, and approved by the Wyoming Department of Environmental Quality, Land Quality Division (LQD) except as otherwise directed in any conditions of any valid mining plan, including this mining plan modification.
4. The operator must comply with the terms and conditions of the Federal coal lease, this mining plan modification approval, and the requirements of Wyoming Permit PT0467 issued under the Wyoming State program approved pursuant to the Surface Mining Control and Reclamation Act of 1977 (30 U.S.C. §§ 1201 *et seq.*). The Secretary retains the authority and jurisdiction to modify or cancel this approval for failure to comply with any of these items or other applicable laws and regulations.

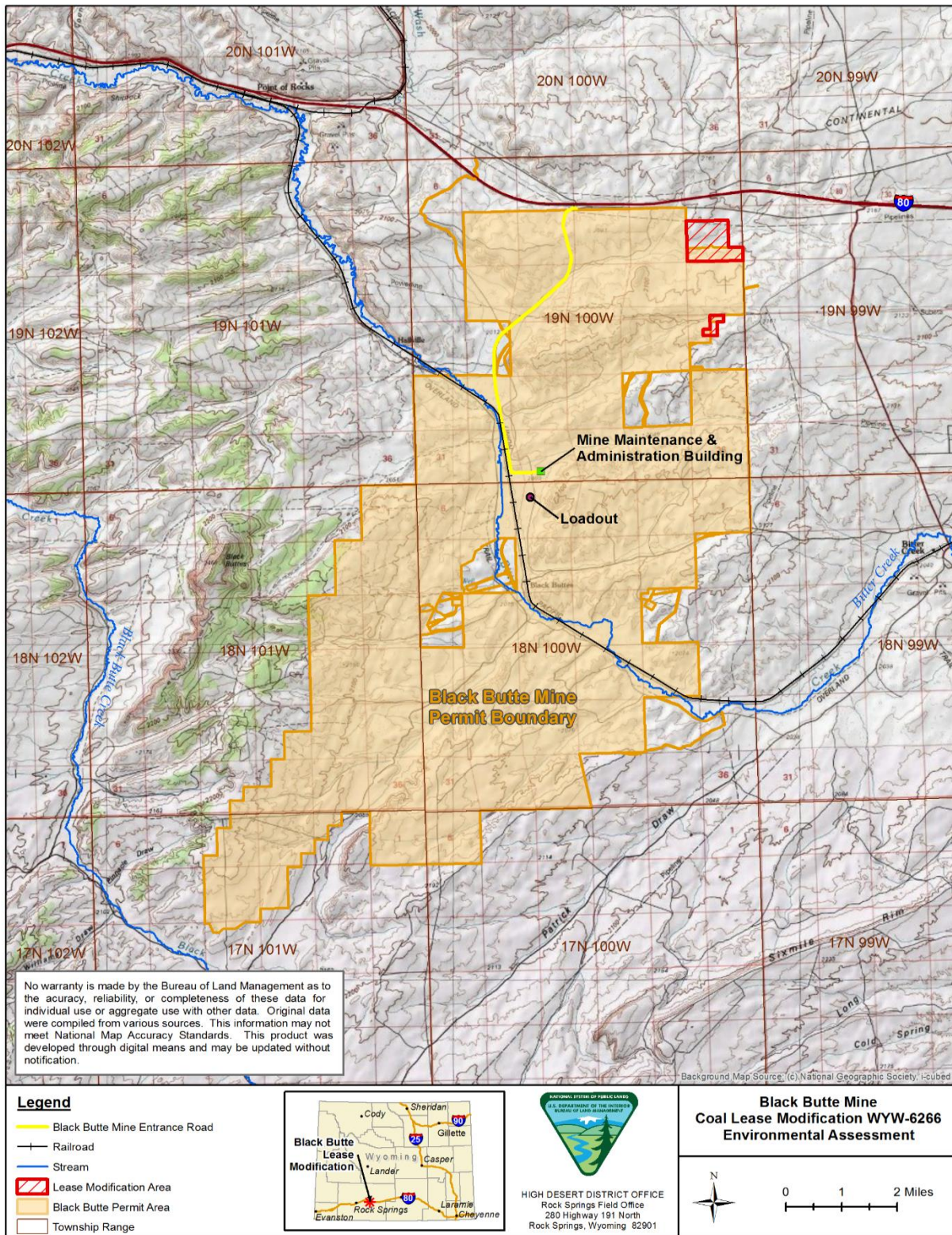
5. This mining plan approval is binding on any person conducting coal development or mining operations under the approved mining plan and will remain in effect until superseded, canceled, or withdrawn.
6. If, during mining operations, unidentified historic and prehistoric resources are discovered, the operator will ensure that the resources are not disturbed and must notify the Wyoming LQD and the Office of Surface Mining Reclamation and Enforcement (OSMRE). The operator must take such actions as are required by the Wyoming LQD in coordination with OSMRE.
7. The Secretary retains jurisdiction to modify or cancel this approval, as required, on the basis of further consultation with the U.S. Fish and Wildlife Service pursuant to Section 7 of the Endangered Species Act, as amended, 16 U.S.C. § 1531 *et seq.*
8. The operator will ensure that surface stripping activities are monitored by a qualified archaeologist at site 48SW6304 either in advance or in normal sequence of mining to mitigate previously unobserved historical features.
9. To the extent that, in the future, the operator chooses to accept and use decommissioned wind turbine blades and towers as backfill within the mining plan area, the operator must notify Wyoming LQD and OSMRE because additional Federal authorizations may be required. This mining plan approval does not authorize such disposal within the mining plan area.

Adam G. Suess
Acting Assistant Secretary,
Land and Minerals Management
U.S. Department of the Interior

Date

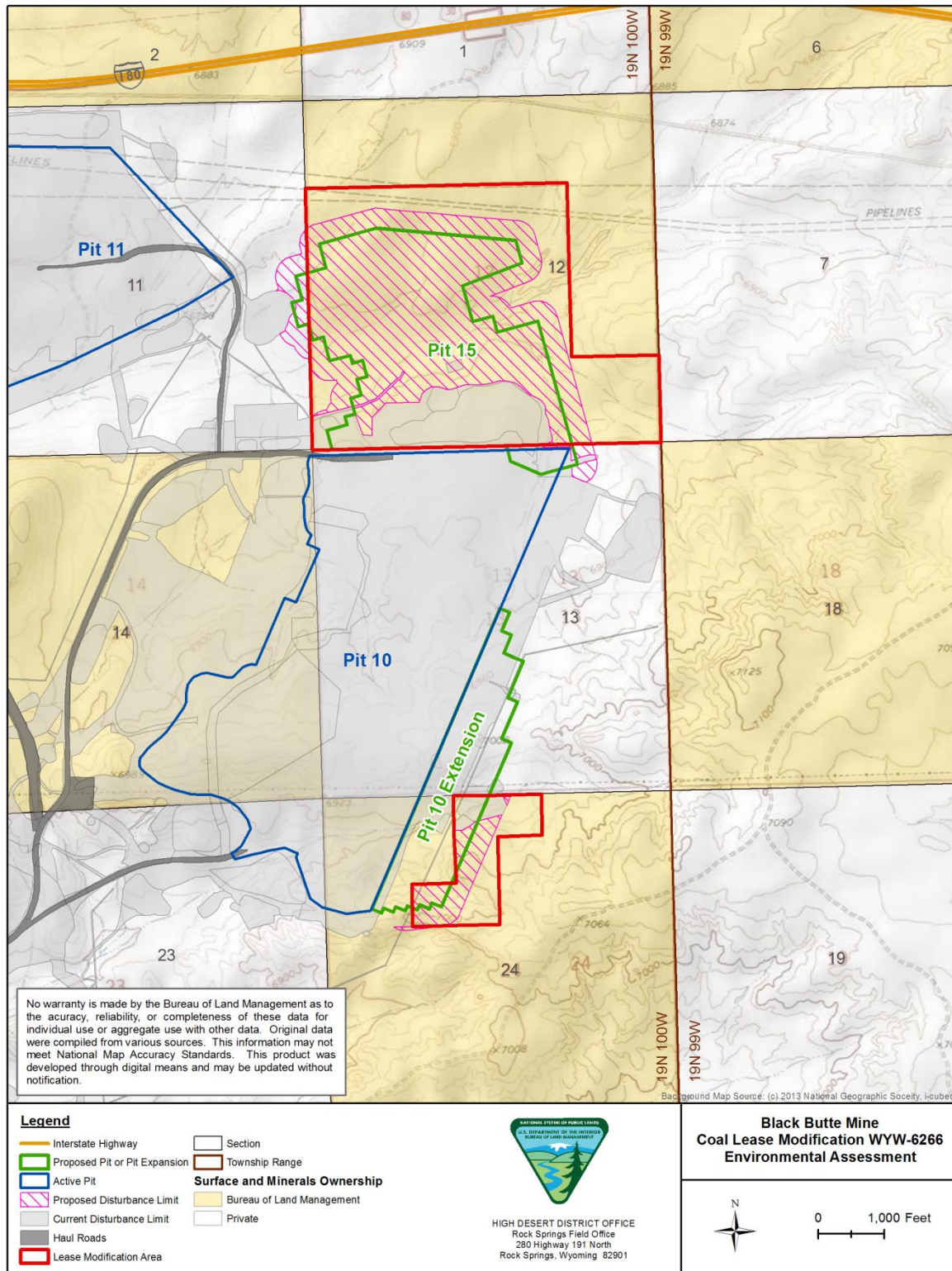
Attachment A

Black Butte Coal Company Lease Modification WYW-6266



Attachment B

Black Butte Coal Company Lease Modification WYW-6266 Surface and Minerals Ownership and Proposed Surface Disturbance



Date: 2/12/2015