

Prepared/Revised: December, 2016

State/Tribe Installation Instructions ArcGIS Desktop 10.4.1

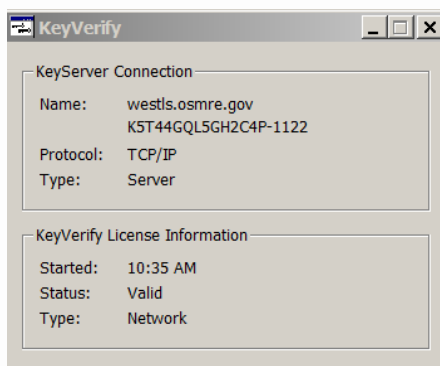
State/Tribal users: Administrative privileges are required to install this software.

Before installing this software, check to make sure that the **KeyServer Client software** is installed on the target computer.

You can check by going to **Start > All Programs > Sassafras K2**. Then select 'KeyVerify.' The resulting screen should indicate a server under 'Name'. It should also list "Valid" under Status. (It may take a moment for the screen to appear.)

If there is no Sassafras K2 folder under All Programs, or the KeyVerify does not indicate a valid install, go to the TIPS website <http://www.tips.osmre.gov/> under **Software – Downloadable Software** and download the K2Client software appropriate to the target computer (32-bit or 64-bit). Follow the installation instructions included on the Downloadable Software page to install the KeyServer K2Client software.

If the Sassafras K2 client is not resident – then the ArcGIS software must not be installed.



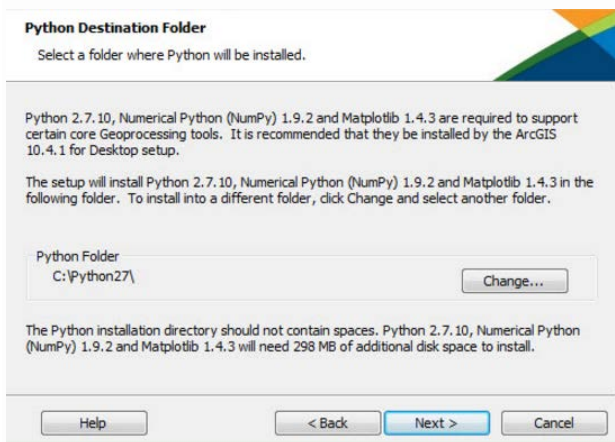
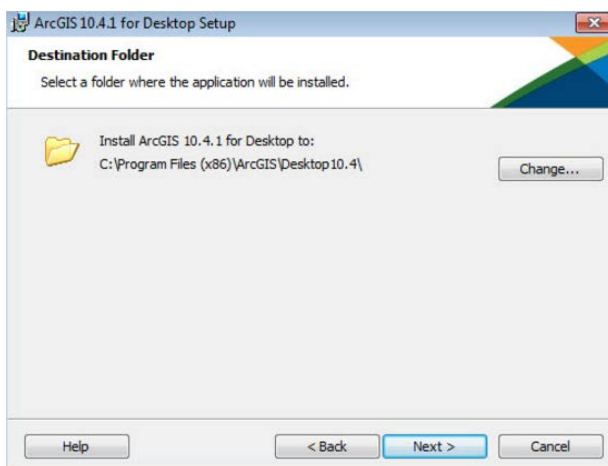
Verify that your computer meets these system requirements:

ArcGIS for Desktop requires Microsoft .NET Framework Version 4.5. If .NET Framework 4.5 is not detected on your machine, the ArcGIS for Desktop setup will not proceed.

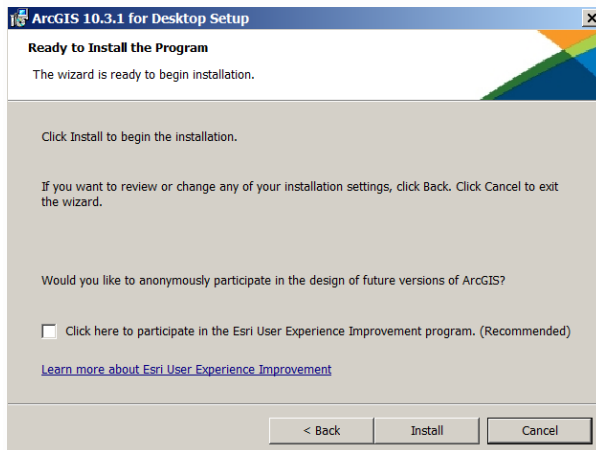
Operating Systems *	Minimum OS Version	Maximum OS Version
Windows 10 Home, Pro, and Enterprise (32 bit and 64 bit [EM64T])		
Windows 8.1 Basic, Pro, and Enterprise (32 bit and 64 bit [EM64T])	Update: April 2014	
Windows 8 Basic, Pro, and Enterprise (32 bit and 64 bit [EM64T])		
Windows 7 Ultimate, Professional, and Enterprise (32 bit and 64 bit [EM64T])	SP1	
Windows Server 2012 R2 Standard and Datacenter (64 bit [EM64T])	Update: April 2014	
Windows Server 2012 Standard and Datacenter (64 bit [EM64T])		
Windows Server 2008 R2 Standard, Enterprise, and Datacenter (64 bit [EM64T])	SP1	
Windows Server 2008 Standard, Enterprise, and Datacenter (32 bit and 64 bit [EM64T])	SP2	SP2

Supported and Recommended	
CPU speed	2.2 GHz minimum; Hyper-threading (HHT) or Multi-core recommended
Platform	x86 or x64 with SSE2 extensions
Memory/RAM	2 GB minimum
Display properties	24-bit color depth
Screen resolution	1024x768 recommended minimum at normal size (96 dpi)
Swap space	Determined by the operating system; 500 MB minimum
Disk space	2.8 GB In addition, up to 50 MB of disk space may be needed by the Windows System directory (typically, C:\Windows\System32). You can view the disk space requirement for each of the 10.4.1 components in the Setup program. If using ArcGlobe, additional disk space may be required. ArcGlobe will create cache files when used.
Video/Graphics adapter	64 MB RAM minimum; 256 MB RAM or higher recommended. NVIDIA, ATI, and Intel chipsets supported. 24-bit capable graphics accelerator OpenGL version 2.0 runtime minimum is required, and Shader Model 3.0 or higher is recommended. Be sure to use the latest available drivers.
Networking hardware	Simple TCP/IP, Network Card, or Microsoft Loopback Adapter is required for the license manager.

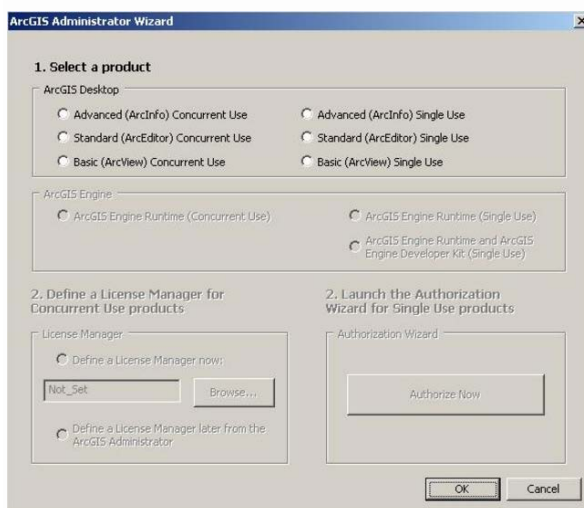
1. Open the ArcGIS 10.4.1 folder; open the ArcGISDesktop_10.4.1 folder.
2. **Click** the Setup.exe file.
3. During the installation, read the license agreement and accept it.
4. The setup program provides an option for a “**Complete installation,**” which installs the applications, style files, templates, and optionally licensed extensions. **Choose it.**
5. Accept the **default Destination Folder** location and the **default Python Destination Folder** identified in the below dialog’s.



- In the “Ready to Install the Application” window, **Un-check the box** then click **Install**. When the installation is complete click Finish.



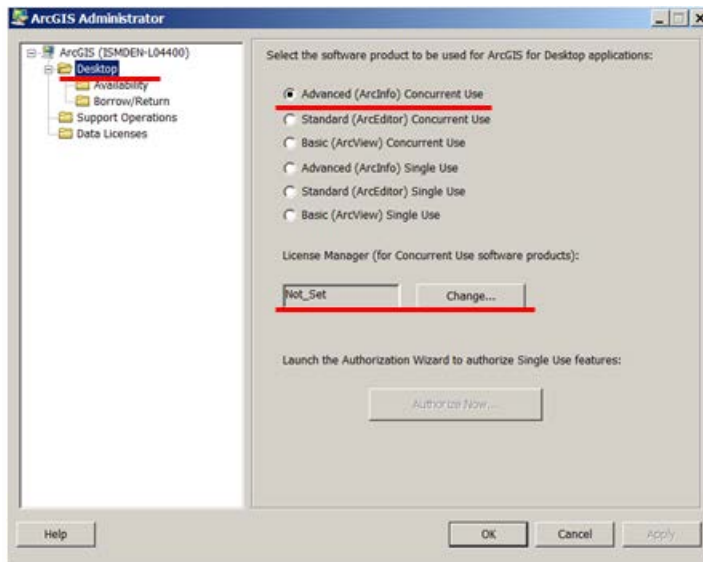
- When the setup is complete the ArcGIS Administrator Wizard may display, but **CLICK CANCEL**.



- Open the ArcGIS Administrator program manually by clicking **Start > All Programs > ArcGIS > ArcGIS Administrator**, then click the **Desktop folder** on the left panel.)

9. Click the button for **Advanced Concurrent Use**.
10. If the License Manager box reads **Not_Set**, then click **Change** and type the license address. (If the License Manager box contains a license path then proceed on with the directions.)

The name of the license manager is located on the **Software Distribution Letter** delivered via your TIPS Service Manager.



Reboot the computer.

End of instructions